

MIAMI-DADE COUNTY PUBLIC SCHOOL
DISTRICT'S UNIVERSAL PARENT/STUDENT HANDBOOK

MIAMI SUNSET SENIOR HIGH SCHOOL

13125 SW 72 STREET MIAMI, FL. 33183

(305) 385-4255

MONDAY – FRIDAY 7:20 AM – 2:20 PM

[HTTP://SUNSETHIGH.DADESCHOOLS.NET](http://sunsethigh.dadeschools.net)



TWITTER: [@MIAMISUNSETSHS](https://twitter.com/MIAMISUNSETSHS)

FACEBOOK: MIAMI SUNSET SENIOR HIGH SCHOOL [@MiamiSunsetSHS](https://www.facebook.com/MiamiSunsetSHS)

INSTAGRAM: [miami_sunset_knights](https://www.instagram.com/miami_sunset_knights)



MIAMI-DADE COUNTY PUBLIC SCHOOL
DISTRICT'S UNIVERSAL PARENT/STUDENT HANDBOOK

Miami-Dade County Public Schools
The School Board of Miami-Dade County, Florida

Ms. Perla Tabares Hantman, Chair

Dr. Steve Gallon III, Vice Chair

Dr. Dorothy Bendross-Mindingall

Ms. Susie V. Castillo

Dr. Lawrence S. Feldman

Dr. Martin Karp

Dr. Lubby Navarro

Dr. Marta Pérez

Ms. Mari Tere Rojas

Student Advisor

Maria Martinez

SUPERINTENDENT OF SCHOOLS

Mr. Alberto M. Carvalho

SCHOOL OPERATIONS

Mrs. Valtena G. Brown

Deputy Superintendent/Chief Operating Officer



MIAMI-DADE COUNTY PUBLIC SCHOOL DISTRICT'S UNIVERSAL PARENT/STUDENT HANDBOOK

Vision Statement

We provide a world class education for every student.

Mission Statement

To be the preeminent provider of the highest quality education that empowers all students to be productive lifelong learners and responsible global citizens.

Values

Excellence - *We pursue the highest standards in academic achievement and organizational performance.*

Equity - *We foster an environment that serves all students and aspires to eliminate the achievement gap.*

Student Focus - *We singularly focus on meeting our students' needs and supporting them in fulfilling their potential.*

Innovation - *We encourage creativity and adaptability to new ideas and methods that will support and improve student learning.*

Accountability - *We accept responsibility for our successes and challenges and seek to transparently share our work in an ethical manner, as we strive towards continuous improvement.*



MIAMI-DADE COUNTY PUBLIC SCHOOL DISTRICT'S UNIVERSAL PARENT/STUDENT HANDBOOK



Miami-Dade County Public Schools

giving our students the world

Superintendent of Schools
Alberto M. Carvalho

Miami-Dade County School Board
Perla Tabares Hantman, Chair
Dr. Steve Gailon III, Vice Chair
Dr. Dorothy Bendross-Mindingall
Susie V. Castillo
Dr. Lawrence S. Feldman
Dr. Martin Karp
Dr. Lubby Navarro
Dr. Marta Pérez
Mari Tere Rojas

August 2020

Dear Parent/Guardian:

On behalf of the School Board and the dedicated teachers and staff of Miami-Dade County Public Schools (M-DCPS), it is with much pride and enthusiasm that I welcome you to the 2020-2021 school year. As we continue responding to the COVID-19 pandemic, we understand the critical role of schooling in providing students and families with a sense of routine and comfort. We remain eager to greet your child and provide him/her with the knowledge and skills needed to thrive in our increasingly globalized society. Students can expect to receive a world-class education in an "A"-rated school system that celebrates their uniqueness while fostering curiosity and creativity within a safe and secure learning environment.

This Parent/Student Handbook outlines the major policies and procedures that guide student life in our school system. I strongly encourage you to familiarize yourself with its contents as students are expected to conduct themselves in accordance with the information and guidelines contained herein.

Furthermore, it is my hope that you and your child will avail yourselves of the numerous resources we provide. As a parent/guardian, you are a vital partner in your child's education and are welcome to actively participate in school and district functions. I encourage you to stay connected by downloading the M-DCPS application on your mobile device and by following us on social media (Twitter, Facebook, Instagram, etc.). For more information regarding specific resources and activities at your child's school, please contact the school directly and ensure that the school's staff is provided with your most updated contact information.

Thank you for your partnership and for entrusting us with your child's education. I wish you and your child much success this academic year.

Sincerely,

Alberto M. Carvalho
Superintendent of Schools

AMC:cg
L088

School Board Administration Building • 1450 N.E. 2nd Avenue • Miami, FL 33132
305-995-1000 • www.dadeschools.net



MIAMI-DADE COUNTY PUBLIC SCHOOL
DISTRICT'S UNIVERSAL PARENT/STUDENT HANDBOOK

TABLE OF CONTENTS

Message from Principal

School's Mission Statement

Alma Mater

Faculty Roster

Feeder Pattern Schools

School Information

- *Bell Schedule*
- *Early Sign Out*
- *Late Arrival*
- *Lost and Found School Policy*
- *Opening and Closing Hours of Schools*

Important Dates

- *Back to School Nights - Open House*
- *Interim Progress Report & Report Card Distribution*
- *School Calendar of Events*

Academic Programs – Student Progression Plan (SPP)

Before/After School Care Program & Middle School Enrichment After School Program

Bring Your Own Devices (BYOD)

Bullying/Cyberbullying

Clinic

Closing of School

Community School Program

Discrimination/Harassment



MIAMI-DADE COUNTY PUBLIC SCHOOL DISTRICT'S UNIVERSAL PARENT/STUDENT HANDBOOK

Dismissal

- [*Bicycles/Skateboards*](#)
- [*Rainy Day Dismissal*](#)
- [*Students Drop-Off Pick-up*](#)

Early Dismissal

[**Elevator**](#)

Emergency Contact Information

Fieldtrips

Homework

[**Interscholastic Athletics/Intramurals**](#)

Mealtime Environment

- *Free Breakfast*
- *Free/Reduced Price Lunch Program*
- *Meal Prices*
- *PAYPAMS*
- *Peanut-Allergies/Peanut-Free School*

Mental Health Services

[**Newsletter Forthcoming**](#)

Parent Toolkits

- Back to School Toolkit

Prekindergarten Programs

Protocols for Addressing Concerns

Public-Private Collaboration

Recess

Safety and Security

- Emergency Operations Plan
- Fire Drills
- Emergency Drills



MIAMI-DADE COUNTY PUBLIC SCHOOL DISTRICT'S UNIVERSAL PARENT/STUDENT HANDBOOK

- Lockdown Procedures
- Threat Assessments
- Visitors

School Activities/Clubs

School Center for Special Instructions (SCSI)

School Class Pictures Process

School Transportation

Special Education/Section 504

Student Records

Student Services

Student Success Centers

The Parent Academy

Transgender and Gender Non-Conforming Students

Verification of Residency

Volunteer Program

Appendix A - School Calendars

Appendix B – Florida Statutes and School Board Policies

Appendix C – Disclosure at Time of Registration

Appendix D – Discrimination/Harassment Poster



MIAMI-DADE COUNTY PUBLIC SCHOOL DISTRICT'S UNIVERSAL PARENT/STUDENT HANDBOOK

PRINCIPAL'S MESSAGE

Dear Knight Family,

Welcome to the 2020-2021 school year! We want to let you know that we are here for you, working together to provide the best education possible during these challenging times. As we embark on our journey together, I would like to ask our Parent's to support their child by ensuring that they are attending school physically or on-line with fidelity and consistency, as we move to the Phase 2 Reopening for our school system.

Parents please ensure that your child wears their mask each and everyday. Also, parents are asked to complete a wellness check on your child and keep the child at home if they are sick. We ask that you remind your children daily to follow social distancing guidelines and practice good hygiene habits throughout the day.

The Sunset Knight Family is dedicated to provide each and every child with the very best education and a clean and safe environment. Together, with your support we will get through these challenging times.

What does it mean to be a student at Miami Sunset Senior High School?

- ✓ You are a member of one of our 5 Academies or three magnets, each a unique program in Miami-Dade County, yet you embrace the honor of being a citizen of 'Knight' Country.
 - ✓ You are a thoughtful, considerate, and capable young woman or man who has accepted the challenge of continuing the tradition of excellence and achievement that has been established by the alumni of Miami Sunset Senior High.
 - ✓ You are a student who desires a world-class education defined by rigor and critical thinking, as well as, by mastery of 21st Century technology skills.
 - ✓ You are in a School of Excellence which fosters success. "Welcome Home!"
- It is, then, with high expectations for an exceptional year that I welcome you to the 2020-2021 school year. It is your good fortune to be a student in the best environment that Miami-Dade County Public Schools offers. Each Staff member is prepared to aid you in attaining your personal goals and highest level of success.

Welcome and go 'KNIGHTS'!



MIAMI-DADE COUNTY PUBLIC SCHOOL DISTRICT'S UNIVERSAL PARENT/STUDENT HANDBOOK

GENERAL SCHOOL INFORMATION

MISSION STATEMENT

The Mission of Miami Sunset Senior High School is to provide the students with a personalized learning environment, academic rigor, innovative skills and knowledge to prepare them for challenging and rewarding careers in a global economy.

VISION STATEMENT

Students will acquire the knowledge to function effectively in today's technology driven world by becoming self-directed lifelong learners that are able to provide positive contributions to society.

ALMA MATER

Sunset High to you we are LOYAL,
Long keep your standard high.
Like the Knights of old
Let us uphold
Our colors the Silver & Black & Gold.
We believe in fairness and justice
These let us not deny.
And when all is said and done,
We will always stand as ONE.
And we honor you our Sunset High.

MASCOT

Our mascot is the KNIGHT.

MOTTO

Stay Golden Sunset

SCHOOL COLORS

Miami Sunset School colors are Black, Gold, Gray, and White.



MIAMI-DADE COUNTY PUBLIC SCHOOL DISTRICT'S UNIVERSAL PARENT/STUDENT HANDBOOK

Faculty Roster

<u>Administration</u> <u>LUX, JOHN</u> <u>GOMEZ, SELENE</u> <u>MUNOZ, RAYDELIN</u>	<u>Teachers</u> <u>Continued</u> <u>VELEZ, JULIO</u> <u>CANALES, JENARO</u> <u>HOROWITZ, RACHEL</u> <u>GAITAN, CAMILO</u> <u>WILLIAMS, TERENCE</u> <u>COOPER, ANTOINETTE</u> <u>CONEJERO, HUGO</u> <u>AMADEO, BETTY</u> <u>GUTIERREZ, NATALIE</u> <u>CEDEÑO, NESTOR</u> <u>BALL, LLOVERA</u> <u>CHARLYN, DEFRANCISCO</u> <u>GABRIELA, ARROCHA</u> <u>HECTOR, WERNER</u> <u>CHRISTINA, GRAVES</u> <u>SABRINA, DONES</u> <u>NAHIR, VARGAS</u> <u>KELLY, CASTELEIRO</u> <u>TERRON, LISSETTE</u> <u>ROSE, LESLIE</u> <u>FRIES, DEBORAH</u> <u>NICKLE, MANDRELL</u> <u>WRIGHT, THERESA</u> <u>CICCARONE, CHERYL</u> <u>HERNANDEZ, LESLEY</u>	<u>Paraprofessionals</u> <u>GONZALEZ, GISELA</u> <u>MONTOYA, MARTHA</u> <u>GUERRA, AMANDA</u> <u>CHICO, LYDIA</u> <u>VAZQUEZ, ZULIMA</u> <u>NUNEZ, ROCIO</u> <u>NARANJO, ADA</u> <u>ARROYAVE, GLORIA</u>
<u>Counselors</u> <u>CUENCA, MONICA</u> <u>PEROZO, REX</u>	<u>Teachers</u> <u>CASTAING, ERIC</u> <u>DUFFOO, ERNEST</u> <u>LOPEZ, CYNTHIA</u> <u>PORRAS, ISRAEL</u> <u>TORRES, OMAR</u> <u>TAPANES, ALINA</u> <u>ALFONSO, PEREZ</u> <u>ANNARELLA, SANDOVAL</u> <u>GABRIELA, LLEDIAS</u> <u>JUAN, MARTINEZ</u> <u>MICHELLE, ROMANO</u> <u>RICARDO, HERNANDEZ</u> <u>RENATTO, COMPANIONI</u> <u>DANIA, FUSCO</u> <u>SUSAN, CERNUDA</u> <u>ERIN, PEREZ</u> <u>MILAGROS, TRUEBA</u> <u>JOSE, HERNANDEZ</u> <u>MARTHA, TEJERA</u> <u>LOYDA, AMBROSE</u> <u>GRAFTON, SUAREZ</u> <u>RAFAEL, HERNANDEZ</u> <u>CARLOS, ELKINS</u> <u>JUDY, CASTILLO</u>	<u>Custodians</u> <u>ORTEGA, SIXTO</u> <u>RODRIGUEZ, DYANELYS</u> <u>CARBON, MARITZA</u> <u>PORTELA, GUADALUPE</u> <u>QUICUTIS, TOMAS</u> <u>VARENCE, GREGORY</u> <u>SORIS, ZOILA</u> <u>BECERRA, JOSE</u> <u>MANUEL, GARCIA CAPOTE</u> <u>LISSY, DEL VALLE</u> <u>TERESA</u>
	<u>Security</u> <u>DE LA CRUZ, MUNOZ</u> <u>CAESAR, RODRIGUEZ</u> <u>MADELAINE, ORETH</u> <u>OLGA, ALARCON</u> <u>ADA, BAEZ</u> <u>JORGE, NARINESINGH</u> <u>ROHINI, RODRIGUEZ</u> <u>NORBERTO, PADRON</u> <u>MAIDA, PAZ</u> <u>CARLOS</u>	<u>Cafeteria</u> <u>GONZALEZ-ORDAZ, DAINYS</u> <u>COLLIER, ROMONA</u>
	<u>Behavior Management</u> <u>Teacher</u> <u>NALL, TERRY</u>	
	<u>Athletic Trainer</u> <u>SALGADO, ELENA</u>	



MIAMI-DADE COUNTY PUBLIC SCHOOL DISTRICT'S UNIVERSAL PARENT/STUDENT HANDBOOK

Feeder Pattern Schools

Elementary Schools

Winston Park K-8

Middle Schools

Winston Park K-8
McMillan Middle School

Senior High

Miami Sunset Senior High




MIAMI-DADE COUNTY PUBLIC SCHOOL
DISTRICT'S UNIVERSAL PARENT/STUDENT HANDBOOK

School Information

MIAMI SUNSET SENIOR HIGH

BELL SCHEDULE

2020-2021

<u>TIME</u>	<u>FIRST LUNCH</u>	<u>SECOND LUNCH</u>
	<u>SECOND FLOOR</u>	<u>FIRST FLOOR AND ROOMS 247 & 251-261</u>
<u>7:20-9:30</u>	<u>BLOCK 1/HR</u>	<u>BLOCK 1/HR</u>
<u>9:40-12:10</u>	<u>BLOCK 2</u>	<u>BLOCK 2</u>
	<u>1ST LUNCH</u> <u>10:20 – 10:55</u>	<u>2ND LUNCH</u> <u>11:35 – 12:10</u>
<u>12:20-2:20</u>	<u>BLOCK 3</u>	<u>BLOCK 3</u>

A-DAY	ODD PERIODS	B-DAY	EVEN PERIODS
BLOCK 1	1	BLOCK 1	2
BLOCK 2	3	BLOCK 2	4
BLOCK 3	5	BLOCK 3	6



MIAMI-DADE COUNTY PUBLIC SCHOOL DISTRICT'S UNIVERSAL PARENT/STUDENT HANDBOOK



- **Early Sign Out**

The early release of students causes disruption to the academic performance of all students and may create safety and security concerns. No students shall be released within the final thirty (30) minutes of the school day unless authorized by the Principal or Principal's designee (i.e., emergency, sickness).

***In an effort to minimize people entering the building, please ensure the following:

1. Parents or guardians are to call and notify the school 15 – 20 minutes prior to picking up students.
2. Once the parent arrives at school, they will present identification to Security Staff.
3. Staff will take their identification to the Attendance Office and retrieve the student from class.
4. The parent/guardian will wait **OUTSIDE** of the building for the student.
5. Attendance Office staff will verify the parent/guardian is authorized to pick up the student and complete the proper sign out documentation.
6. Staff will then take the identification back to the parent/guardian.
7. The student will come down and be dismissed through the front door off the building.

- **Late Arrivals**

Late arrivals during 1st or 2nd period, will report to their First Block Class and the Teacher will document the tardy in the gradebook. Students who arrive after the First Block of the day, must go to the Attendance Office for a pass to class. Students must be in school for at least 2 hours to be counted for Attendance to school. Students will receive consequences after 5 tardies. Excessive tardiness may result in loss of privileges, detention, parent conference, and/or suspension.

- **Lost and Found School Policy**

Located in the Activities Office

- **Opening and Closing Hours of Schools**

Classes are in session from 7:20 am until 2:20 pm. Students are expected to be on time to their classes.



MIAMI-DADE COUNTY PUBLIC SCHOOL DISTRICT'S UNIVERSAL PARENT/STUDENT HANDBOOK

Important Dates

- Back to School Nights – Open House***

School Level	Window Period	School Date
Elementary/K-8 Centers	TBD	
Middle Schools	TBD	
Senior High Schools	TBD	
Special Centers	TBD	

- Interim Progress Report & Report Card Distribution***

Grading Period	Interim Progress Report Distribution	Report Card Distribution
1	9/25/2020	11/6/2020
2	12/4/2020	2/5/2021
3	2/19/2021	4/16/2021
4	5/7/2021	6/25/2021

- School Calendar of Events (TBD)***

Academic Programs – Student Progression Plan (SPP), School Board Policy 5410

Provides guidance to teachers, school and district administrators, parents and other stakeholders regarding the requirements and procedures for students to progress from one grade to the next, kindergarten through grade 12 and adult education. The information presented in this document is derived from requirements set forth by Florida Statutes, State Board of Education Rules and Policies established by The School Board of Miami-Dade County.



MIAMI-DADE COUNTY PUBLIC SCHOOL DISTRICT'S UNIVERSAL PARENT/STUDENT HANDBOOK

Before/After School Care Program & Middle School Enrichment After School Program

For those parents considering going back to work and/or are presently working, there are 224 low cost Before and After School Care programs that serve both Elementary and K-8 Center students and 62 Middle School Enrichment After School programs that help tutor middle school students throughout the Miami-Dade County School district. Each of these programs are staffed with state certified instructors, state certified program managers, or state certified activity leaders who are all prepared to enrich and expand the after-school experience of the students they serve.

This year, Miami-Dade County Public Schools will offer 286 After School programs on school days. Before-school care programs will be provided as needed.

After-school care programs are conducted from the time of school dismissal until 6:00 p.m. Before-school care programs begin approximately one hour before school starts. Summer Camp operates from 7:00 a.m. until 6:00 p.m. Parents should check with their child's school for specific start times.

All after-school care programs provide planned activities, which include homework assistance, indoor and outdoor games, arts and crafts, snack time and various recreational activities. Many programs offer reading and math tutoring, music, ceramics, chess, drama and other classes designed to provide participants with a variety of educational and enrichment experiences. Before-school care programs provide supervised, quiet activities for students.

The cost of Elementary and K-8 after school care is \$40 per week; the cost of Middle School Enrichment after school care is \$40 per week; the cost of before school care is \$20 per week and the cost of Summer Camp is \$100.00 per week. These programs are offered by one of seven providers:

- Miami-Dade County Public Schools Principal Operated Before After-School Programs
- Young Men's Christian Association (YMCA)
- Young Women's Christian Association (YWCA)
- Family Christian Association of America (FCAA)
- Sunshine After-School Child Care (SASCC)
- South Florida After-School All Stars (SFASAS)

Bring Your Own Device (BYOD)

Bring Your Own Device allows students, parents, staff and guests to integrate the utilization of technology devices at specified times during the instructional day to enhance the learning experience. Examples of the types of technology which can be used are Windows laptops/tablets, Mac laptops, Android tablets, and iPads.

Bullying/Cyberbullying

The School Board has adopted a policy Against Bullying and Harassment with Bullying defined by state law as systematically and chronically inflicting physical harm or psychological distress on one or more students. Complaints of bullying should be reported to the Principal promptly. Cyberbullying is a form of bullying that takes place virtually over digital devices such as computers, smartphones, and tablets. Cyberbullying most commonly takes place via social media,



MIAMI-DADE COUNTY PUBLIC SCHOOL DISTRICT'S UNIVERSAL PARENT/STUDENT HANDBOOK

texting, instant messaging, and email. Say NO to cyberbullying! If you or someone you know is being bullied, report this information to the Bullying/Harassment Anonymous Helpline at 305-995-CARE (2273) or the school principal. Resources:

- <http://studentservices.dadeschools.net/#>
- http://studentservices.dadeschools.net/bullying/b-h_policy_manual.asp
- StopBullying.gov
- <https://www.netsmartz.org/Cyberbullying>

Clinic

The Clinic will be monitored by School Staff

Closing of School

The emergency closing of a school for any cause, such as weather or in which the safety of individuals may be endangered, is only at the discretion of the Superintendent of Schools.

Community School Program

The Community School Program offers an opportunity for the public-school system to determine the needs of the community and provides a mechanism to meet those needs. The curriculum of the Community School Program is as wide and varied as the needs of the community it serves. Community schools provide programs that are funded by fees, tuition, grants, and donations, on community school sites, in adult centers, in satellite programs, and at off-campus, non-public school locations throughout Miami-Dade County.

Each of the 39 Community Education Centers offer classes for individuals of all ages, skill levels and language capabilities. Students enrolling in language or computer classes have the opportunity to enhance the job skills needed to satisfy the demands of today's world. Annually, thousands of people have taken advantage of these recreational and educational opportunities, and if an individual or group wants to acquire a specific new skill, Miami-Dade County Public Schools can work with each to create a class that suits the needs of all interests.

For more specific information on Miami-Dade County Public Schools Community Education and Before and After School Care programs or Middle School Enrichment After School programs, please log on to our website at www.dadecommunityschools.net or please call Mr. Victor Ferrante, Executive Director at 305-817-0014.

Discrimination/Harassment

The School Board has a prohibition against discrimination/harassment based on race, color, ethnic or national origin, citizenship status, religion, marital status, disability, genetic information, age, political beliefs, sexual orientation, gender, gender identification, social and family background, linguistic preference, pregnancy, and any other basis prohibited by law. Students are encouraged to promptly report incidents of discriminatory or harassing conduct to their Principal or the Office of Civil Rights Compliance (CRC) so that the conduct can be addressed before it becomes severe, pervasive, and persistent. The School Board has also adopted a policy Against Bullying and Harassment with Bullying defined by state law as systematically and



MIAMI-DADE COUNTY PUBLIC SCHOOL DISTRICT'S UNIVERSAL PARENT/STUDENT HANDBOOK

chronically inflicting physical harm or psychological distress on one or more students. Complaints of bullying should be reported to the Principal promptly.

Dismissal

- ***Bicycles/Skateboards***

There is an area in the front of the school where students may lock up their bicycles. Skateboards are stored on the skateboard rack inside the building on the first floor to the left of the Auditorium

- ***Rainy Day Dismissal***

The rear bus lane has a covered walkway for students traveling to and from school on the buses. The front of the school also has a covered walkway to assist student during increment weather.

- ***Student Drop-Off Pick-up***

General Education Students are asked to park in the Front Center Parking Lot to drop off and pick up students. Special Education Students are provided with a Parking Pass for the West Parking Lot to drop off and pick up students. Paraprofessionals also assist in supervision of SPED Students during arrival and dismissal.

Early Dismissal

In the case of divorced or separated parents, the enrolling parent shall indicate on the Emergency Student Data Form the individual(s) to whom the student may be released during the school day.

Elevator

The school elevator is to be used by individuals who are disabled or injured and cannot use the stairs.

Emergency Contact Information

Emergency Student Data Forms are distributed during the first week of school. Students are expected to bring the forms home and present them to their parents/guardians. The form must be carefully completed and returned. The information provided on the Emergency Student Data Forms will enable school staff to contact the parent/guardian immediately in the case of an emergency. Parent/Guardian(s) that provide a cell phone number will receive text messages should an emergency arise. Students may only be released from school to the persons listed on the form after presenting a picture identification. No persons, other than school staff, will have access to the information submitted. Any divorced or separated parent contesting the information in the Emergency Student Data Form may seek assistance from the court governing their divorce, separation, or custody matters to compel the enrolling parent to revise the information.

Fieldtrips

All fieldtrips must be approved by the principal and Region Superintendent. Participation in fieldtrips requires that the student present a fieldtrip form signed by the parent/guardian to his/her teacher(s) in advance. In addition, at times vendors who have a "no refund" policy will require



MIAMI-DADE COUNTY PUBLIC SCHOOL DISTRICT'S UNIVERSAL PARENT/STUDENT HANDBOOK

schools to pay the full amount of the fieldtrip prior to the event. In this case, students/parents will be notified in advance of the vendor's "no refund" policy.

Homework

Principals are encouraged to work with teachers and parents to implement guidelines found in **Homework Policy 2330**. Teachers are required to provide students with make-up assignments once the absence has been excused; however, it is the responsibility of the student to request the assignments from the teacher(s).

HOMework POLICY 2330

The School Board of Miami-Dade County, Florida recognizes regular, purposeful homework as an essential component of the instructional process in Miami-Dade County Public Schools. Homework is an integral factor in fostering the academic achievement of students and in extending school activities into the home and the community. Regular homework provides opportunities for developmental practice, drill, the application of skills already learned, the development of independent study skills, enrichment activities, and self discipline. Homework should provide reinforcement and extension of class instruction, and should serve as a basis for further study and preparation for future class assignments. In light of the major purposes for homework, it is not to be assigned as punishment for students for disciplinary reasons.

Responsibility for homework should gradually increase for students in grades one through five. Secondary school homework assignments should recognize that more time and individual student initiative are expected in order to meet increased instructional demands. Homework assignments to exceptional students should reflect the special needs of such students.

In general, homework assignments will be completed for the following day; however, long-range assignments and/or special projects should provide students with an opportunity to develop and refine research and independent study skills and the ability to work independently. Teachers should review evidence of progress periodically before the student submits a long-range assignment.

Teachers shall consider the following factors when making homework assignments:

1. The grade level of the student
2. Level and degree of difficulty of the subject being studied
3. The maturity level of the student
4. The instructional needs of the student
5. The purpose of the assignment and its relation to the objectives of the course under study



MIAMI-DADE COUNTY PUBLIC SCHOOL DISTRICT'S UNIVERSAL PARENT/STUDENT HANDBOOK

6. The length of the assignment and the amount of time that will be required to complete it
7. Homework demands being made in other subject areas

6Gx13- 6A-1.23

8. Materials that are readily available to students and do not create a financial burden
9. Holidays, as well as Spring and Winter breaks
10. Evaluation of group projects based on individual student participation
11. Provision of ample time in class for completion of group projects

It is the responsibility of the school staff to assure quality and value in homework through making assignments which are:

1. An outgrowth of classroom instruction
2. Clear and definite in purpose
3. Clearly related to the objectives and competencies being pursued in the classroom

Principals will be responsible for:

1. Communicating the School Board Rule on homework to staff members, students, and parents/guardians
2. Reviewing the School Board Homework Rule with the total school staff
3. Encouraging parents/guardians to communicate with the school if a student's homework assignments are excessive or not sufficiently challenging to the student, according to the parents'/guardians= views
4. Monitoring the implementation of the homework rule
5. Emphasizing reading as an integral part of the school's homework policy

Teachers will be responsible for:

1. Teaching independent study skills



MIAMI-DADE COUNTY PUBLIC SCHOOL DISTRICT'S UNIVERSAL PARENT/STUDENT HANDBOOK

2. Making specific assignments

3. Checking, reviewing, evaluating, and/or grading student homework, according to the teacher's individual methods, in keeping with a system that is clearly explained to the class

6Gx13- 6A-1.23

4. Giving feedback on homework assignments in a timely manner

5. Making instructions related to homework clear and providing, when necessary, a short period of supervised study or a period of questioning to insure that the students understand the assignment

6. Assigning students homework that includes at least 30 minutes each day devoted to reading

Students will be responsible for:

1. Completing assigned homework as directed
2. Returning homework to the teacher by the designated time
3. Submitting homework assignments which reflect careful attention to detail and quality of work
4. Devoting at least 30 minutes to reading as part of the homework assignment

Parents'/Guardians= responsibilities include:

1. Providing continued interest and concern for the child's successful performance in school through encouraging and supporting the child in his/her performance of homework assigned
2. Indicating an interest about assignments and assisting, if possible, when requested by the child, but not to include performing the work for the child
3. Supporting the school in regard to the students' being assigned homework
4. Requesting assignments for students when short term absences are involved
5. Assisting the school in stressing the importance of reading and its benefits
6. Assuring that students read for a period of at least 30 minutes each day in addition to any other assigned homework



MIAMI-DADE COUNTY PUBLIC SCHOOL DISTRICT'S UNIVERSAL PARENT/STUDENT HANDBOOK

It is understood that it is not the parent's/guardian=s responsibility to have to give a great deal of assistance to the student in completing homework. Parents or other family members should, however, make every effort to read to students who cannot read on their own during the assigned homework period.

6Gx13- 6A-1.23

It is the school's responsibility to make instructions related to homework clear and to provide, when necessary, a short period of supervised study or a period of questioning to ensure that the students understand the assignment.

Frequency and Quantity of Homework Assignments

Each school, when implementing this homework policy, should consider these guidelines as daily averages:

Frequency of	Total Daily Average	Grade Level Assignments	(All Subjects)
K-1	Daily (5 days a week)	30 minutes	2-3
	Daily (5 days a week)	45 minutes	4-5
	Daily (5 days a week)	60 minutes	6-7-8
	Daily (5 days a week)	75 minutes	9-12
	Daily (5 days a week)	120 minutes	

Note: These times do not reflect the additional 30 minutes that are to be devoted to reading.

Reading is recognized as a universal skill that relates to all subjects. Therefore, when specific homework assignments are not given, or when the homework assignment is completed in an expeditious manner, every student will read, minimally, for the amount of time specified in this Board Rule.

Kindergarten teachers shall exercise judgment in making homework assignments, considering the child's readiness level and the type of work to be accomplished. It is recommended that parents/guardians read aloud to their children.

At the secondary level, students in academic classes should receive a minimum of two homework assignments each week in each class. These assignments should be reflected in the student's class grade.



MIAMI-DADE COUNTY PUBLIC SCHOOL DISTRICT'S UNIVERSAL PARENT/STUDENT HANDBOOK

Interscholastic Athletics/Intramurals

The Division of Athletics, Activities and Accreditation works with M-DCPS school sites to provide students with opportunities to participate in athletics at various levels. Athletic programs are offered at K-8 Centers, middle schools and high schools. At the middle schools, athletics consists of intramural and interscholastic programs. At the high school level, interscholastic programs are offered at most senior high schools.

For participation in interscholastic athletics at the middle school level, a student must have a 2.00 GPA in conduct and academics to participate. His or her parent must sign the M-DCPS *Middle*

School Athletic Program Consent and Release from Liability Certificate. For participation in interscholastic athletics at the high school level, a GPA of 2.00 in conduct and academics is required except for incoming freshman. All participants must purchase athletic and/or football insurance to participate and must have a current physical form on file.

A home education student must register his or her intent to participate in interscholastic extracurricular activities as a representative of the school before participation.

The parents and student must also sign the *Contract for Student Participation in Interscholastic Competitions or Performances*. The District also has policies concerning transfer students and participation in athletics. If a parent has questions concerning these policies, he or she should contact the Division of Athletics, Activities and Accreditation.

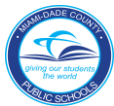
Mealtime Environment

School lunchtime should be an opportunity to encourage healthy lifestyle, promote socialization that will affect early behaviors.

The Department of Food and Nutrition serves healthy meals daily. Please visit nutrition.dadeschools.net for details on menus, programs, and services.

- **Free Breakfast**

Miami-Dade County Public Schools offers breakfast free of charge to all M-DCPS Students. The breakfast at no charge is not dependent on the student qualifying for free/reduced price meals at lunch.



MIAMI-DADE COUNTY PUBLIC SCHOOL DISTRICT'S UNIVERSAL PARENT/STUDENT HANDBOOK

- **Free/Reduced Price Lunch Program**

The USDA Child Nutrition Programs as administered by Miami-Dade County Public Schools provide free and reduced priced lunch for children unable to pay the full price. In place of the paper application, School Meal Program Brochures are distributed to all students informing parents on the application process and meal program. Parents are encouraged to complete an online application at the Department of Food and Nutrition at freeandreducedmealapp.dadeschools.net. Paper applications are available in the school's front office upon request. Many students are approved through Direct Certification and do not submit a lunch application. If approved for meal benefits, the approval status is valid throughout the school year, the summer, and approximately the first twenty days of the next school year.

- **Meal Prices**

- *****NOTE*** AT THIS TIME BREAKFAST & LUNCH IS FREE TO ALL STUDENTS – DON'T FORGET TO COMPLETE YOUR FREE & REDUCED LUNCH APPLICATION**

Breakfast	School Lunch	Prices
All Students No Charge	Elementary Students	\$ 2.25
Adults \$ 2.00	Middle/Secondary Students	\$ 2.50
	Reduced Price lunch, all grade levels	\$ 0.40
	Adults	\$ 3.00

- **PAYPAMS**

Miami-Dade County Public School's Department of Food and Nutrition allows parents/guardians the convenience to pay online for their child's meals with a credit or debit card at paypams.com. Parents/guardians create an account in PayPams for the child, and will be able to access the following:

- a. view the account balance
- b. schedule automatic payments
- c. receive low-balance e-mail reminders
- d. view a report of daily spending and cafeteria purchases

- **Peanut Allergies/Peanut-Free School**

Parents/Guardians should notify the school principal of any allergy or other medical condition their child has and request the appropriate forms for completion.



MIAMI-DADE COUNTY PUBLIC SCHOOL DISTRICT'S UNIVERSAL PARENT/STUDENT HANDBOOK

Mental Health Services

Miami-Dade County Public Schools established The Department of Mental Health Services to ensure the coordination of school and community resources and services to support the specific mental health needs of students. The programs in place provide prevention initiatives and also services for students with pre-existing mental health challenges. For assistance contact your child's school, the parent assistance line at (305) 995-7100 or visit <http://www.mentalhealthservices.dadeschools.net>

Parent Toolkits

Visit <http://toolkit.dadeschools.net> for back-to-school information. Please note, for the opening of 2020-2021 school year, the site will direct you to <http://reopening.dadeschools.net> for the most updated information.

Prekindergarten Programs

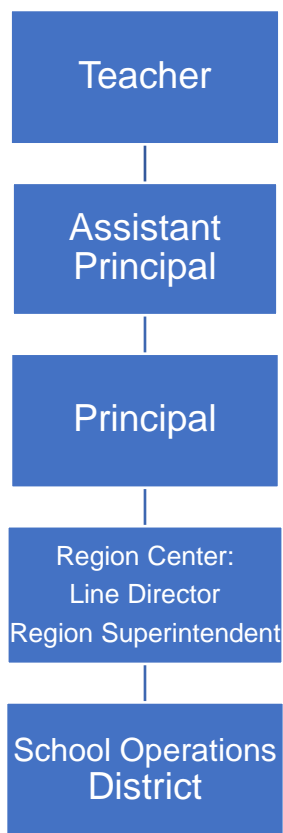
M-DCPS offers a variety of prekindergarten programs throughout the District. Parents should contact their home school for the available options for Pre-K students. For additional information on VPK or Head Start/Early Head Start Programs, parents may contact the Department of Early Childhood Programs at 305-995-7632. For information on Pre-K ESE Programs, parents should contact 305-271-5701. Parents may also access information at earlychildhood.dadeschools.net.

Protocol for Addressing Parental Concerns

Parents may generally address their complaints or concerns to the school administration, which may be followed by Region and District department review by appropriate. For issues involving an individual teacher or class, parent/guardian address their concerns to the following individuals in the order below.



MIAMI-DADE COUNTY PUBLIC SCHOOL DISTRICT'S UNIVERSAL PARENT/STUDENT HANDBOOK



Public-Private Collaboration

Requests for private instructional personnel to collaborate with public instructional personnel in the educational setting should be directed to the Principal for application of District procedures.

Recess

Recess is supervised, unstructured playtime where children have choices, develop rules for play and release energy and stress. Recess will be conducted outdoors when weather permits. In the case of inclement weather, appropriate recess activities will be conducted indoors.

Schools shall provide at least 100 minutes of supervised, safe, and unstructured free-play recess each week for students in kindergarten through grade 5, so that there are at least 20 consecutive minutes of free-play recess per day.



MIAMI-DADE COUNTY PUBLIC SCHOOL DISTRICT'S UNIVERSAL PARENT/STUDENT HANDBOOK

Safety and Security

- ***Emergency Operations Plan***

Student and employee safety is a primary concern of the Miami-Dade County Public School (M-DCPS) System. The Emergency Operations Plan (EOP) was created to provide school personnel with the necessary leadership skills and knowledge needed to respond to critical incidents or other related emergencies that may occur in our schools/community. All schools have a site-specific plan to address all types of critical incidents. These plans address the individual needs of the school and provide guidelines for devising methods for communicating with the staff, students, parents/guardians, and the media during a critical incident or an emergency. Some of the protective action procedures include emergency drills (active shooter, hostage, & bomb drills), , the evacuation of students/staff from the building(s), evacuation of the disabled and if necessary the relocation of students/staff from the school campus, lockdown procedures and holding/dismissing students during school and community emergencies. Some important tips for parents/guardians to remember during a Critical Incident are as follows:

- Remain calm;
- Monitor media outlets for updates and official messages from M-DCPS;
- Do not flood the school with telephone calls; and
- If the school is on lockdown, wait until the lockdown is lifted before going to the school.

All school administrators, Region Center Superintendents/Directors and all MDSPD Police officers have been adequately trained in the school EOP and are prepared to respond immediately during a critical incident or emergency to provide safety for all children.

BeSafe Anonymous Reporting System (Insert Flyer)

http://hoover.dadeschools.net/portable_doc/68128_Be_Safe_Anonymous_Reporting_System_Flyer.pdf

Fire Drills

Ten fire drills will take place during the school year according to the Miami-Dade County Public Schools Policy and Emergency Procedures. At the sound of the emergency bell, students must stop what they are doing and follow the teacher's instructions. Students must clear the building promptly by the prescribed route. Any student who is in the hallway or the restroom at the sound of the emergency bell must proceed to the nearest exit and locate the teacher. Students, teachers and staff must remain outside the building until permission is given to re-enter.



MIAMI-DADE COUNTY PUBLIC SCHOOL DISTRICT'S UNIVERSAL PARENT/STUDENT HANDBOOK

- ***Emergency Drills***

Twenty-one emergency drills, to include one monthly active shooter drill and one hostage situation or bomb threat drill, will take place during the school year according to Florida Senate Bill 7026, also known as the Marjory Stoneman Douglas High School Public Safety Act. One additional active shooter drill must take place within the first 30 days of the opening of schools. All emergency drills shall be conducted in accordance with the appropriate corresponding situational response as outlined in the EOP and shall include developmentally appropriate and age-appropriate procedures.

- ***Lockdown Procedures***

Lockdowns are utilized in response to an immediate threat posed to students and staff. Schools have successfully performed lockdowns in response to police activity adjacent to a facility and potential armed intruders onsite. Students, faculty and staff will comply with all the procedures outlined in the Miami-Dade Public Schools Critical Incident Response Plan and remain on lockdown until a school administrator and/or law enforcement makes an "All Clear" announcement.

- ***Threat Assessments***

Miami-Dade County Public Schools (M-DCPS) has a mandated set of procedures for threat assessment. A threat assessment is a problem-solving approach to violence prevention that involves assessment and intervention with students who have threatened violence in some way. When a preliminary determination is made, by the school administrator or designee, that a student poses a threat of violence or physical harm to him/herself or others is known, a Threat Assessment Team (TAT) shall be notified and shall convene to determine the best course of action. Authorized members of the TAT may obtain criminal history record information, if applicable. Students determined to be at-risk for violence will be referred for mental health services. Threat assessment and disciplinary procedures are separate processes. Regardless of whether a threat is determined to be transient, serious substantive, or very serious substantive, appropriate disciplinary procedures shall be followed in accordance with the Code of Student Conduct.

- ***Visitors***

Due to legal regulations, students are not permitted to have guests attend school with them at any time. Parents/guardians are always welcome, and tours may be arranged with the principal to view the school. Classroom visits require a request with 24-hour notice. All visitors must first register with security at the main entrance, sign-in, produce photo identification, and then proceed to register in the main office. Anyone who fails to follow these procedures will be considered a trespasser and is subject to arrest.



MIAMI-DADE COUNTY PUBLIC SCHOOL DISTRICT'S UNIVERSAL PARENT/STUDENT HANDBOOK

School Activities/Clubs

All School Activities, clubs, and organizations must be approved by the principal and conform to the School Board Policies 5845 - Student Activities, 5830 - Student Fundraising and 9211 – Parent Organization, Booster Clubs, and Other Fund-Raising Activities.

- **Clubs**

Miami-Dade County Public Schools' students may participate in a wide variety of activities, including student council, subject-area clubs, honor societies, service clubs, school publications and class activities. School-sponsored clubs may be curriculum-related or noncurricular-related.

Curriculum-related clubs are student groups whose goals are an extension of the activities and objectives in a particular subject area within the school's curriculum. Conversely, noncurricular-related clubs are student groups whose goals are special interest oriented and not directly related to the curriculum. Meetings of noncurricular-related clubs may be scheduled only at times when instruction is not taking place, either before or after school.

- **School Club List**

School Center for Special Instructions (SCSI)

School administrators may elect to assign students to the School Center for Special Instruction (SCSI) as an interim alternative educational setting to suspension from school. SCSI is designed to provide strategies and resources to students focused on learning new behavior skills. When misconduct in a class results in an assignment to SCSI, the student should be reassigned from only the class in which the misconduct occurred. Continued misconduct can result in the reassignment from all classes.

School Class Picture Process

The school class picture monies will no longer be collected by school staff for this activity. Collection of monies will be conducted by the photographer and/or photographer's staff.

At no time, shall a staff member, parent, volunteer, or member of a school-allied organization such as the PTA handle school class picture monies.

School Transportation

Miami-Dade County Public Schools will transport more than 60,000 students a day this school year, using a fleet of 1,300 buses on nearly 1100 school-bus routes. The service is for students who live more than two (2) miles from their assigned school and for students with special needs in some instances.

Before school begins, parents/guardians of all students eligible for bus transportation will receive a post card from the school district identifying the student's bus stop and times of pick-up and



MIAMI-DADE COUNTY PUBLIC SCHOOL DISTRICT'S UNIVERSAL PARENT/STUDENT HANDBOOK

delivery. Information on student bus assignments will be posted on the Parent Portal at www.dadeschools.net. The information on bus assignments on the Parent Portal is updated each night. Parents/guardians are encouraged to check the Parent Portal throughout the school year to obtain the most current information on their children's bus assignment.

Parents interested in determining their child's transportation eligibility should contact their child's school for information.

Special Education/Section 504

The School Board of Miami-Dade County ensures that all students suspected of having a disability are identified, evaluated, and provided appropriate, specially designed instruction and related services, if it is determined that the student meets the state's eligibility criteria and the parent/guardian consents to initial placement.

Students who are not eligible for specially designed instruction and related services in accordance with state eligibility categories but have a disability that substantially affects a major life activity may be eligible for accommodations pursuant to Section 504 of the Rehabilitation Act of 1973.

As the parent/guardian of a child with disabilities, you are a very important member of the team that plans your child's education. Be informed and get involved. If you have any questions, please contact your child's school. Staff from the special education department and your child's student service provider will help to answer your questions. Additional information may also be found at <http://ese.dadeschools.net/>.

Student Records

The education records and personally identifiable information of students are protected by The Family Educational Rights and Privacy Act (FERPA) and the Florida Statutes. These laws provide that without the prior consent of the parent, guardian or eligible student, a student's records may not be released, except in accordance with the provisions listed in the above-cited laws. The laws provide certain exceptions to the prior consent requirement to the release of student records, which include, but are not limited to, school officials with a legitimate educational interest and lawfully issued subpoenas and court orders with notice prior to disclosure. Parents and eligible students are also provided the right to challenge the accuracy of their education records in accordance with the procedures outlined in School Board Policy 8330.

Each school must provide to the parent(s), guardian(s) or eligible student(s) an annual notice in writing of their right to inspect and review student records. Once a student reaches 18 years of age or is attending an institution of post-secondary education, the consent is required from the student only, unless the student qualifies as a dependent under the law.

Student Services

The Division of Student Services provides prevention and intervention services to PK-Adult students throughout the District. These services focus on the elimination of social and emotional barriers that inhibit students' academic success and prepare students to be college



MIAMI-DADE COUNTY PUBLIC SCHOOL DISTRICT'S UNIVERSAL PARENT/STUDENT HANDBOOK

and career ready. An integrated team of uniquely trained student services professionals deliver these direct services to students.

Student Success Centers

The Student Success Centers provide an educational setting and safe-haven for referred students (ages 11 and older) exhibiting Level III-IV behavior and (with Region approval) habitual Level II infractions of the Code of Student Conduct.

The Parent Academy

Miami-Dade County Public Schools created The Parent Academy to bridge the gap between home and school by connecting parents to valuable resources and information, which answers questions on topics that impact children's lives, including helping children learn, parenting skills, financial management, and health and wellness.

The Parent Academy supports parents in becoming more involved in their children's education and empowers them to set and achieve personal empowerment goals for higher education and career advancement by providing free, year-round workshops, classes and events at schools, libraries, parks, colleges, private businesses and neighborhood centers across the county.

Parents can participate in workshops and classes that are aligned to their needs and convenient to their homes and workplaces. Upcoming events and workshop offerings are listed on The Parent Academy website at parentacademymiami.com. For additional information, please call The Parent Academy at 305-995-2680 or The Department of Family Support Services at 305-271-8257.

Transgender and Gender Non-Conforming Students

The School Board of Miami-Dade County has adopted comprehensive anti-discrimination and anti-bullying policies that require all students be treated with respect regardless of their unique characteristics, including sexual orientation or gender identity.¹ Every student has the right to learn in a safe and accepting school environment and schools have a responsibility to provide a safe and nondiscriminatory environment for all students, including transgender and gender nonconforming students.

These guidelines are intended to promote a positive, proactive approach that upholds and protects the rights of transgender and gender nonconforming students; and best practices to ensure that transgender students and gender nonconforming students have equitable access to all aspects of school life (academic, extracurricular and social) in ways that preserve and protect their dignity.

¹ See School Board Policies 5517, *Anti-Discrimination/Harassment (Students)* and 5517.01, *Bullying and Harassment*.



MIAMI-DADE COUNTY PUBLIC SCHOOL DISTRICT'S UNIVERSAL PARENT/STUDENT HANDBOOK

Verifications of Residency

If verification is not provided or acceptable, the Superintendent may verify the student's residence.

Anyone who knowingly makes a false statement in writing with the intent to mislead a public servant in the performance of his/her official duty is guilty of a second-degree misdemeanor of the second degree under [F.S. 837.06](#). In addition, anyone who knowingly makes a false verified declaration is guilty of perjury, a third-degree felony under [F.S. 95.525](#).

Volunteer Program

The School Volunteer Program is responsible for electronic registration, background checks and trainings of volunteers. There are two different levels of volunteerism.

Level 1 - complete a database background check	Level 2 - complete a fingerprint background check
<ul style="list-style-type: none">•Day chaperones for field trips•Classroom assistants•Math and/or reading tutors.	<ul style="list-style-type: none">•Certified Volunteers•Mentors•Listeners•Athletic/Physical Education assistants•Overnight chaperones.

Any individual interested in volunteering in Miami-Dade County Public Schools must:

- Show a current valid government-issued identification with picture.
- Show a social security card (check name and number).
- Complete a background check.
- Upon clearance, attend an orientation at the school.



MIAMI-DADE COUNTY PUBLIC SCHOOL
DISTRICT'S UNIVERSAL PARENT/STUDENT HANDBOOK

APPENDIX A – School Calendars



MIAMI-DADE COUNTY PUBLIC SCHOOL DISTRICT'S UNIVERSAL PARENT/STUDENT HANDBOOK



MIAMI-DADE COUNTY PUBLIC SCHOOLS 2020-2021 SCHOOL CALENDAR ELEMENTARY AND SECONDARY REVISED 8/12/20

July 2020					August 2020					September 2020				
M	T	W	T	F	M	T	W	T	F	M	T	W	T	F
		1	2	3	3	4	5	6	7	8	1	2	3	4
6	7	8	9	10	10	11	12	13	14	15	8	9	10	11
13	14	15	16	17	17	18	19	20	21	14	15	16	17	18
20	21	22	23	24	24	25	26	27	28	21	22	23	24	25
27	28	29	30	31	31					28	29	30		
October 2020					November 2020					December 2020				
M	T	W	T	F	M	T	W	T	F	M	T	W	T	F
			1	2	2	3	4	5	6		1	2	3	4
5	6	7	8	9	9	10	11	12	13	7	8	9	10	11
12	13	14	15	16	16	17	18	19	20	14	15	16	17	18
19	20	21	22	23	23	24	25	26	27	28	29	30	31	31
26	27	28	29	30	30									
January 2021					February 2021					March 2021				
M	T	W	T	F	M	T	W	T	F	M	T	W	T	F
				5	1	2	3	4	5	1	2	3	4	5
4	5	6	7	8	8	9	10	11	12	8	9	10	11	12
11	12	13	14	15	15	16	17	18	19	15	16	17	18	19
18	19	20	21	22	22	23	24	25	26	22	23	24	25	26
25	26	27	28	29						28	29	30	31	
April 2021					May 2021					June 2021				
M	T	W	T	F	M	T	W	T	F	M	T	W	T	F
			7	8	3	4	5	6	7		1	2	3	4
5	6	7	8	9	10	11	12	13	14	7	8	9	10	11
12	13	14	15	16	17	18	19	20	21	14	15	16	17	18
19	20	21	22	23	24	25	26	27	28	21	22	23	24	25
26	27	28	29	30	28					28	29	30		

New Teachers Report
 Teacher Planning Day
 Teacher Planning Day - (No Opt)
 District-wide Professional Development Day
 Floating Teacher Planning Day (No Opt)

Recess Day
 Beg/End of Grading Period
 Legal Holiday
 Available to opt
 Teacher Planning Day available to opt

Days in Grading Period
1 - 37
2 - 49
3 - 43
4 - 46

For information on employee opt days, please refer to back of calendar.



MIAMI-DADE COUNTY PUBLIC SCHOOL DISTRICT'S UNIVERSAL PARENT/STUDENT HANDBOOK

MIAMI-DADE COUNTY PUBLIC SCHOOLS 2020-2021 SCHOOL CALENDAR ELEMENTARY AND SECONDARY MIAMI, FLORIDA

August 19, 2020	Teacher planning day; not available to opt; no students in school
August 20	Teacher planning day; District-wide Professional Development Day - not available to opt; no students in school
August 21	Teacher planning day; District-wide Professional Development Day - not available to opt; no students in school
August 24	Teacher planning day; District-wide Professional Development Day - not available to opt; no students in school
August 25	Teacher planning day; District-wide Professional Development Day - not available to opt; no students in school
August 26	Teacher planning day; District-wide Professional Development Day - not available to opt; no students in school
August 27	Teacher planning day; District-wide Professional Development Day - not available to opt; no students in school
August 28	Teacher planning day; not available to opt; no students in school
August 31	First Day of School; begin first semester
September 7	Labor Day; holiday for students and employees
September 28*+§	Teacher planning day; no students in school
October 22	End first grading period; first semester
October 23	Teacher planning day; not available to opt; no students in school
October 26	Begin second grading period; first semester
November 3	Teacher planning day; District-wide Professional Development Day - not available to opt; no students in school
November 11	Observance of Veterans' Day; holiday for students and employees
November 25*+§	Teacher planning day; no students in school
November 26	Thanksgiving; Board-approved holiday for students and employees
November 27	Recess Day
December 21-	Winter recess for students and employees with the exception of Fraternal Order of Police and select 12-month employees
January 1, 2021	and select 12-month employees
January 18	Observance of Dr. Martin Luther King, Jr.'s Birthday; holiday for students and employees
January 22	End first semester and second grading period
January 25	Begin third grading period; second semester
February 15	All Presidents Day; holiday for students and employees
March 25	End third grading period; second semester
March 26*+§	Teacher planning day; no students in school
March 29-	Spring recess for students and employees with the exception of Fraternal Order of Police and select 12-month employees
April 2	and select 12-month employees
April 5	Begin fourth grading period; second semester
May 28	This day will be used as a floating planning day prior to returning to the traditional schoolhouse in Stage 2; not available to opt. Should M-DCPS not be able to transition to the traditional schoolhouse, May 28, 2021 will be a Teacher planning day available to opt.
May 31	Observance of Memorial Day; holiday for students and employees
June 9	Last Day of School; end fourth grading period; second semester
June 10	Teacher planning day; not available to opt; no students in school

NOTE: Every Wednesday students in elementary schools (Grades 2-5) and K-8 Centers (Grades 2-8) are released one (1) hour early

Job Category	Beginning Date	Ending Date
Teachers new to the system	August 12, 2020	June 10, 2021
Assistant Principals and 10-month clerical	August 12, 2020	June 17, 2021
Cafeteria Managers	August 14, 2020	June 10, 2021
Satellite Assistants	August 18, 2020	June 9, 2021
All Instructional Staff, Paraprofessionals & Security	August 19, 2020	June 10, 2021
Assistant to Cafeteria Managers/MAT Specialists	August 20, 2020	June 9, 2021
Cafeteria Workers (part-time)	August 24, 2020	June 9, 2021

*Teachers/paraprofessionals and school support personnel may opt to work one or two days, August 17, 18, 2020, or June 11, 14, 2021, in lieu of any one or two of the following days: September 28, 2020, November 25, 2020, March 26, 2021. August 20, 21, 24, 25, 26, 27, 2020, and November 3, 2020 are District-wide Professional Development Days and are not available to opt. October 23, 2020 is a Teacher Planning Day not available to opt. May 28, 2021 is a Floating Teacher Planning Day prior to returning to the traditional schoolhouse in Stage 2; not available to opt. Should M-DCPS not be able to transition to the traditional schoolhouse, May 28, 2021 will be a Teacher planning day available to opt.

+Teachers new to Miami-Dade County Public Schools may opt to work one or two days, June 11, 14, 2021, in lieu of any one or two of the following days: September 28, 2020, November 25, 2020, March 26, 2021. August 20, 21, 24, 25, 26, 27, 2020, and November 3, 2020 are District-wide Professional Development Days and are not available to opt. October 23, 2020 is a Teacher Planning Day not available to opt. May 28, 2021 is a Floating Teacher Planning Day prior to returning to the traditional schoolhouse in Stage 2; not available to opt. Should M-DCPS not be able to transition to the traditional schoolhouse, May 28, 2021 will be a Teacher planning day available to opt.

#Ten-month secretarial and clerical employees may opt to work one or two days August 10, 11, 2020, or June 18, 21, 2021, in lieu of any one or two of the following days: September 28, 2020, November 25, 2020, March 26, 2021. August 20, 21, 24, 25, 26, 27, 2020, and November 3, 2020 are District-wide Professional Development Days and are not available to opt. October 23, 2020 is a Teacher Planning Day not available to opt. May 28, 2021 is a Floating Teacher Planning Day prior to returning to the traditional schoolhouse in Stage 2; not available to opt. Should M-DCPS not be able to transition to the traditional schoolhouse, May 28, 2021 will be a Teacher planning day available to opt.



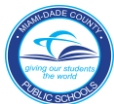
MIAMI-DADE COUNTY PUBLIC SCHOOL DISTRICT'S UNIVERSAL PARENT/STUDENT HANDBOOK



MIAMI-DADE COUNTY PUBLIC SCHOOLS 2020-2021 SCHOOL CALENDAR JUVENILE JUSTICE CENTER

July 2020 <table> <tr><th>M</th><th>T</th><th>W</th><th>T</th><th>F</th></tr> <tr><td></td><td></td><td>1</td><td>2</td><td>3</td></tr> <tr><td>6</td><td>7</td><td>8</td><td>9</td><td>10</td></tr> <tr><td>13</td><td>14</td><td>15</td><td>16</td><td>17</td></tr> <tr><td>20</td><td>21</td><td>22</td><td>23</td><td>24</td></tr> <tr><td>27</td><td>28</td><td>29</td><td>30</td><td>31</td></tr> </table>	M	T	W	T	F			1	2	3	6	7	8	9	10	13	14	15	16	17	20	21	22	23	24	27	28	29	30	31	August 2020 <table> <tr><th>M</th><th>T</th><th>W</th><th>T</th><th>F</th></tr> <tr><td>3</td><td>4</td><td>5</td><td>6</td><td>7</td></tr> <tr><td>10</td><td>11</td><td>12</td><td>13</td><td>14</td></tr> <tr><td>17</td><td>18</td><td>19</td><td>20</td><td>21</td></tr> <tr><td>24</td><td>25</td><td>26</td><td>27</td><td>28</td></tr> <tr><td>31</td><td></td><td></td><td></td><td></td></tr> </table>	M	T	W	T	F	3	4	5	6	7	10	11	12	13	14	17	18	19	20	21	24	25	26	27	28	31					September 2020 <table> <tr><th>M</th><th>T</th><th>W</th><th>T</th><th>F</th></tr> <tr><td></td><td>1</td><td>2</td><td>3</td><td>4</td></tr> <tr><td>7</td><td>8</td><td>9</td><td>10</td><td>11</td></tr> <tr><td>14</td><td>15</td><td>16</td><td>17</td><td>18</td></tr> <tr><td>21</td><td>22</td><td>23</td><td>24</td><td>25</td></tr> <tr><td>28</td><td>29</td><td>30</td><td></td><td></td></tr> </table>	M	T	W	T	F		1	2	3	4	7	8	9	10	11	14	15	16	17	18	21	22	23	24	25	28	29	30		
M	T	W	T	F																																																																																								
		1	2	3																																																																																								
6	7	8	9	10																																																																																								
13	14	15	16	17																																																																																								
20	21	22	23	24																																																																																								
27	28	29	30	31																																																																																								
M	T	W	T	F																																																																																								
3	4	5	6	7																																																																																								
10	11	12	13	14																																																																																								
17	18	19	20	21																																																																																								
24	25	26	27	28																																																																																								
31																																																																																												
M	T	W	T	F																																																																																								
	1	2	3	4																																																																																								
7	8	9	10	11																																																																																								
14	15	16	17	18																																																																																								
21	22	23	24	25																																																																																								
28	29	30																																																																																										
October 2020 <table> <tr><th>M</th><th>T</th><th>W</th><th>T</th><th>F</th></tr> <tr><td></td><td></td><td></td><td>1</td><td>2</td></tr> <tr><td>5</td><td>6</td><td>7</td><td>8</td><td>9</td></tr> <tr><td>12</td><td>13</td><td>14</td><td>15</td><td>16</td></tr> <tr><td>19</td><td>20</td><td>21</td><td>22</td><td>23</td></tr> <tr><td>26</td><td>27</td><td>28</td><td>29</td><td>30</td></tr> </table>	M	T	W	T	F				1	2	5	6	7	8	9	12	13	14	15	16	19	20	21	22	23	26	27	28	29	30	November 2020 <table> <tr><th>M</th><th>T</th><th>W</th><th>T</th><th>F</th></tr> <tr><td>2</td><td>3</td><td>4</td><td>5</td><td>6</td></tr> <tr><td>9</td><td>10</td><td>11</td><td>12</td><td>13</td></tr> <tr><td>16</td><td>17</td><td>18</td><td>19</td><td>20</td></tr> <tr><td>23</td><td>24</td><td>25</td><td>26</td><td>27</td></tr> <tr><td>30</td><td></td><td></td><td></td><td></td></tr> </table>	M	T	W	T	F	2	3	4	5	6	9	10	11	12	13	16	17	18	19	20	23	24	25	26	27	30					December 2020 <table> <tr><th>M</th><th>T</th><th>W</th><th>T</th><th>F</th></tr> <tr><td></td><td>1</td><td>2</td><td>3</td><td>4</td></tr> <tr><td>7</td><td>8</td><td>9</td><td>10</td><td>11</td></tr> <tr><td>14</td><td>15</td><td>16</td><td>17</td><td>18</td></tr> <tr><td>21</td><td>22</td><td>23</td><td>24</td><td>25</td></tr> <tr><td>28</td><td>29</td><td>30</td><td></td><td></td></tr> </table>	M	T	W	T	F		1	2	3	4	7	8	9	10	11	14	15	16	17	18	21	22	23	24	25	28	29	30		
M	T	W	T	F																																																																																								
			1	2																																																																																								
5	6	7	8	9																																																																																								
12	13	14	15	16																																																																																								
19	20	21	22	23																																																																																								
26	27	28	29	30																																																																																								
M	T	W	T	F																																																																																								
2	3	4	5	6																																																																																								
9	10	11	12	13																																																																																								
16	17	18	19	20																																																																																								
23	24	25	26	27																																																																																								
30																																																																																												
M	T	W	T	F																																																																																								
	1	2	3	4																																																																																								
7	8	9	10	11																																																																																								
14	15	16	17	18																																																																																								
21	22	23	24	25																																																																																								
28	29	30																																																																																										
January 2021 <table> <tr><th>M</th><th>T</th><th>W</th><th>T</th><th>F</th></tr> <tr><td></td><td></td><td></td><td></td><td></td></tr> <tr><td>4</td><td>5</td><td>6</td><td>7</td><td>8</td></tr> <tr><td>11</td><td>12</td><td>13</td><td>14</td><td>15</td></tr> <tr><td>18</td><td>19</td><td>20</td><td>21</td><td>22</td></tr> <tr><td>25</td><td>26</td><td>27</td><td>28</td><td>29</td></tr> </table>	M	T	W	T	F						4	5	6	7	8	11	12	13	14	15	18	19	20	21	22	25	26	27	28	29	February 2021 <table> <tr><th>M</th><th>T</th><th>W</th><th>T</th><th>F</th></tr> <tr><td>1</td><td>2</td><td>3</td><td>4</td><td>5</td></tr> <tr><td>8</td><td>9</td><td>10</td><td>11</td><td>12</td></tr> <tr><td>15</td><td>16</td><td>17</td><td>18</td><td>19</td></tr> <tr><td>22</td><td>23</td><td>24</td><td>25</td><td>26</td></tr> <tr><td></td><td></td><td></td><td></td><td></td></tr> </table>	M	T	W	T	F	1	2	3	4	5	8	9	10	11	12	15	16	17	18	19	22	23	24	25	26						March 2021 <table> <tr><th>M</th><th>T</th><th>W</th><th>T</th><th>F</th></tr> <tr><td></td><td></td><td></td><td></td><td></td></tr> <tr><td>8</td><td>9</td><td>10</td><td>11</td><td>12</td></tr> <tr><td>15</td><td>16</td><td>17</td><td>18</td><td>19</td></tr> <tr><td>22</td><td>23</td><td>24</td><td>25</td><td>26</td></tr> <tr><td></td><td></td><td></td><td></td><td></td></tr> </table>	M	T	W	T	F						8	9	10	11	12	15	16	17	18	19	22	23	24	25	26					
M	T	W	T	F																																																																																								
4	5	6	7	8																																																																																								
11	12	13	14	15																																																																																								
18	19	20	21	22																																																																																								
25	26	27	28	29																																																																																								
M	T	W	T	F																																																																																								
1	2	3	4	5																																																																																								
8	9	10	11	12																																																																																								
15	16	17	18	19																																																																																								
22	23	24	25	26																																																																																								
M	T	W	T	F																																																																																								
8	9	10	11	12																																																																																								
15	16	17	18	19																																																																																								
22	23	24	25	26																																																																																								
April 2021 <table> <tr><th>M</th><th>T</th><th>W</th><th>T</th><th>F</th></tr> <tr><td></td><td></td><td></td><td></td><td></td></tr> <tr><td>5</td><td>6</td><td>7</td><td>8</td><td>9</td></tr> <tr><td>12</td><td>13</td><td>14</td><td>15</td><td>16</td></tr> <tr><td>19</td><td>20</td><td>21</td><td>22</td><td>23</td></tr> <tr><td>26</td><td>27</td><td>28</td><td>29</td><td>30</td></tr> </table>	M	T	W	T	F						5	6	7	8	9	12	13	14	15	16	19	20	21	22	23	26	27	28	29	30	May 2021 <table> <tr><th>M</th><th>T</th><th>W</th><th>T</th><th>F</th></tr> <tr><td>3</td><td>4</td><td>5</td><td>6</td><td>7</td></tr> <tr><td>10</td><td>11</td><td>12</td><td>13</td><td>14</td></tr> <tr><td>17</td><td>18</td><td>19</td><td>20</td><td>21</td></tr> <tr><td>24</td><td>25</td><td>26</td><td>27</td><td>28</td></tr> <tr><td></td><td></td><td></td><td></td><td></td></tr> </table>	M	T	W	T	F	3	4	5	6	7	10	11	12	13	14	17	18	19	20	21	24	25	26	27	28						June 2021 <table> <tr><th>M</th><th>T</th><th>W</th><th>T</th><th>F</th></tr> <tr><td></td><td></td><td></td><td></td><td></td></tr> <tr><td>7</td><td>8</td><td>9</td><td>10</td><td>11</td></tr> <tr><td>14</td><td>15</td><td>16</td><td>17</td><td>18</td></tr> <tr><td>21</td><td>22</td><td>23</td><td>24</td><td>25</td></tr> <tr><td>28</td><td>29</td><td>30</td><td></td><td></td></tr> </table>	M	T	W	T	F						7	8	9	10	11	14	15	16	17	18	21	22	23	24	25	28	29	30		
M	T	W	T	F																																																																																								
5	6	7	8	9																																																																																								
12	13	14	15	16																																																																																								
19	20	21	22	23																																																																																								
26	27	28	29	30																																																																																								
M	T	W	T	F																																																																																								
3	4	5	6	7																																																																																								
10	11	12	13	14																																																																																								
17	18	19	20	21																																																																																								
24	25	26	27	28																																																																																								
M	T	W	T	F																																																																																								
7	8	9	10	11																																																																																								
14	15	16	17	18																																																																																								
21	22	23	24	25																																																																																								
28	29	30																																																																																										
July 2021 <table> <tr><th>M</th><th>T</th><th>W</th><th>T</th><th>F</th></tr> <tr><td></td><td></td><td></td><td>1</td><td>2</td></tr> <tr><td>5</td><td>6</td><td>7</td><td>8</td><td>9</td></tr> <tr><td>12</td><td>13</td><td>14</td><td>15</td><td>16</td></tr> <tr><td>19</td><td>20</td><td>21</td><td>22</td><td>23</td></tr> <tr><td>26</td><td>27</td><td>28</td><td>29</td><td>30</td></tr> </table>	M	T	W	T	F				1	2	5	6	7	8	9	12	13	14	15	16	19	20	21	22	23	26	27	28	29	30	<div> <div> <div>Teacher Planning Day</div> <div>Teacher Planning Day - District-wide</div> <div>Professional Development Day (No Opt)</div> <div>Legal Holiday</div> </div> <div> <div>Recess Day</div> <div>Beg/End of Grading Period</div> <div>Saturday Classes</div> <div>Available to opt</div> </div> </div>	Days in Grading Period <div>1 - 30</div> <div>2 - 48</div> <div>3 - 48</div>																																																												
M	T	W	T	F																																																																																								
			1	2																																																																																								
5	6	7	8	9																																																																																								
12	13	14	15	16																																																																																								
19	20	21	22	23																																																																																								
26	27	28	29	30																																																																																								

For information on employee opt days, please refer to back of calendar.



MIAMI-DADE COUNTY PUBLIC SCHOOL DISTRICT'S UNIVERSAL PARENT/STUDENT HANDBOOK

MIAMI-DADE COUNTY PUBLIC SCHOOLS 2020-2021 SCHOOL CALENDAR JUVENILE JUSTICE EDUCATION

July 1, 2020	No compensation, available to opt
July 2	Teacher planning day; no students in school
July 6	Begin Summer grading period
August 14	End Summer grading period
August 17	Begin first grading period, first semester
August 19	Teacher planning day; not available to opt; no students in school
August 20	Teacher planning day; District-wide Professional Development Day – not available to opt; no students in school
August 21	Teacher planning day; not available to opt; no students in school
August 29	Saturday classes
September 7	Labor Day; holiday for students and employees
September 12	Saturday classes
September 26	Saturday classes
September 28*	Teacher planning day; no students in school
October 10	Saturday classes
October 22	End of First grading period, first semester
October 23*	Teacher planning day; no students in school
October 26	Begin second grading period, first semester
October 31	Saturday classes
November 3	Teacher planning day; District-wide Professional Development Day – not available to opt; no students in school
November 11	Observance of Veterans' Day; holiday for students and employees
November 14	Saturday classes
November 25*	Teacher planning day; no students in school
November 26	Thanksgiving; Board-approved holiday for students and employees
November 27	Recess day
December 12	Saturday classes
December 21-	Winter recess for students and employees with the exception of Fraternal Order of Police and
January 1, 2021	select 12-month employees
January 9	Saturday classes
January 14	End second grading period; first semester
January 15	Begin third grading period; second semester
January 18	Observance of Dr. Martin Luther King, Jr.'s Birthday; holiday for students and employees
January 22*	Teacher planning day; no students in school
February 6	Saturday classes
February 15	All Presidents' Day; holiday for students and employees
February 20	Saturday classes
March 13	Saturday classes
March 25	End third grading period; second semester
March 26*	Teacher planning day; no students in school
March 29-	Spring recess for students and employees with the exception of Fraternal Order of Police and
April 2	select 12-month employees
April 5	Begin fourth grading period; second semester
April 17	Saturday classes
May 8	Saturday classes
May 18	End fourth grading period; second semester
May 19	Begin fifth grading period
May 22	Saturday classes
May 31	Observance of Memorial Day; holiday for students and employees
June 5	Saturday classes
June 28	End of fifth grading period
June 29	Teacher planning day; not available to opt; no students in school

***Teachers/paraprofessionals, school support personnel, and 10-month secretarial/clerical employees** may opt to work one or two days, (refer to memorandum RE: 2020-2021 OPT DAYS DJJ SCHOOLS), July 1, 2020, in lieu of any one, two or three of the following days: September 28, 2020, October 23, 2020, November 25, 2020, January 22, 2021, March 26, 2021. August 20, 2020 and November 3, 2020 are District-wide Professional Development Days and are not available to opt.



MIAMI-DADE COUNTY PUBLIC SCHOOL DISTRICT'S UNIVERSAL PARENT/STUDENT HANDBOOK



MIAMI-DADE COUNTY PUBLIC SCHOOLS 2020-2021 SCHOOL CALENDAR ADULT/VOCATIONAL EDUCATION

August 2020					September 2020					October 2020				
M	T	W	T	F	M	T	W	T	F	M	T	W	T	F
3	4	5	6	7		1	2	3	4				1	2
10	11	12	13	14	8	9	10	11		5	6	7	8	9
17	18	19	20	21	14	15	16	17	18	12	13	14	15	16
24	25	26	27	28	21	22	23	24	25	19	20	21	22	23
31					28	29	30			26	27	28	29	30
November 2020					December 2020					January 2021				
M	T	W	T	F	M	T	W	T	F	M	T	W	T	F
2	3	4	5	6		1	2	3	4					
9	10	11	12	13	7	8	9	10	11	4	5	6	7	8
16	17	18	19	20	14	15	16	17	18	11	12	13	14	15
23	24	25	26	27						18	19	20	21	22
30										25	26	27	28	29
February 2021					March 2021					April 2021				
M	T	W	T	F	M	T	W	T	F	M	T	W	T	F
1	2	3	4	5	1	2	3	4	5					
8	9	10	11	12	8	9	10	11	12	5	6	7	8	9
15	16	17	18	19	15	16	17	18	19	12	13	14	15	16
22	23	24	25	26	22	23	24	25	26	19	20	21	22	23
										26	27	28	29	30
May 2021					June 2021					July 2021				
M	T	W	T	F	M	T	W	T	F	M	T	W	T	F
3	4	5	6	7		1	2	3	4				1	2
10	11	12	13	14	7	8	9	10	11	6	7	8	9	
17	18	19	20	21	14	15	16	17	18	12	13	14	15	16
24	25	26	27	28	21	22	23	24	25	19	20	21	22	23
					28	29	30			26	27	28	29	30
August 2021														
M	T	W	T	F										
2	3	4	5	6										
9	10	11	12	13										
16	17	18	19	20										
23	24	25	26	27										
30	31													

	New Teachers Report	<input type="checkbox"/>	Available to opt
	Teacher Planning Day		
	Teacher Planning Day - (No Opt)		
	District-wide Professional Development		
	Recess Day		
	Begin/End of Grading Period		
	Legal Holiday		

Days in Grading Period	
1 -	77
2 -	61
3 -	78

For information on employee opt days, please refer to back of calendar.



MIAMI-DADE COUNTY PUBLIC SCHOOL DISTRICT'S UNIVERSAL PARENT/STUDENT HANDBOOK

MIAMI-DADE COUNTY PUBLIC SCHOOLS 2020-2021 SCHOOL CALENDAR ADULT/VOCATIONAL EDUCATION

HOLIDAYS 2020	
September 7	Labor Day
November 11	Veterans' Day
November 26	Thanksgiving Day

HOLIDAYS 2021	
January 18	Observance of Dr. Martin Luther King, Jr.'s Birthday
February 15	All Presidents' Day
May 31	Observance of Memorial Day
July 5	Fourth of July

Number of School Days in TRIMESTER 1					Number of School Days in TRIMESTER 2				Number of School Days in TRIMESTER 3				
Aug	Sept	Oct	Nov	Dec	Jan	Feb	Mar	Apr	Apr	May	June	July	Aug
6	20	21	16	14	18	19	19	5	15	20	21	20	2
TOTAL: 77					TOTAL: 61				TOTAL: 78				
TOTAL TRIMESTER DAYS STUDENTS ARE IN SCHOOL = 216													

*Teachers may opt to work one or two days, August 17, 18, 2020, or August 5, 6, 2021, in lieu of any of the teacher planning days except August 19, 2020, August 21, 2020 and the designated District-wide Professional Development Days, August 20, 2020 and November 3, 2020. Also, at the discretion of the principal, teachers may opt to conduct classes on a teacher planning day in lieu of a regularly scheduled class day during those times when special events and activities scheduled by the day school program disrupt on-campus adult education programs.

**August 4, 2021 is a Teacher planning day; not available to opt.



MIAMI-DADE COUNTY PUBLIC SCHOOL DISTRICT'S UNIVERSAL PARENT/STUDENT HANDBOOK

APPENDIX B – Florida Statutes and School Board Policies

View all School Board Policies at: [School Board Bylaws & Policies](#)

Academics

- **2235 - MUSIC, ART, AND PHYSICAL EDUCATION**
 - Music, art, and physical education are fundamental subjects in the school's curriculum because they contribute to every child's academic and social development. Art and Music education helps level the "learning field" across socio-economic boundaries while strengthening student problem-solving and critical thinking skills and contributing to the overall academic achievement of students.
- **2240 - CONTROVERSIAL ISSUES AND STUDENT EXPRESSION**
 - Students are encouraged to participate in discussions, speeches, and other expressions in which many points of view, including those that are controversial, are freely explored. A controversial issue is a topic on which opposing points of view have been promulgated by responsible opinion or likely to arouse both support and opposition in the community.
- **2370.01 – VIRTUAL INSTRUCTION**
 - The enrollment period for the District-operated full-time virtual instruction program, Miami-Dade Online Academy, opens in the spring of each school year for a minimum of ninety days and closes thirty days before the first day of the school year.
- **2416 – STUDENT PRIVACY AND PARENTAL ACCESS TO INFORMATION**
 - Additionally, parents have the right to inspect, upon request, any instructional material used as part of the educational curriculum of the student and within a reasonable period of time after the request is received by the building principal. "Instructional material" means instructional content that is provided to a student, regardless of its format, including printed and representational materials, audio-visual materials, and materials in electronic or digital formats (such as materials accessible through the Internet). The term does not include academic tests or assessments.
- **2421 - K-12 CAREER-TECHNICAL EDUCATION PROGRAM**
 - Career-technical education is designed to provide career and technical education experiences. These experiences will complement and reinforce academic concepts that are particularly amenable to contextualized learning in a distinct career area and provide occupationally specific skills.



MIAMI-DADE COUNTY PUBLIC SCHOOL DISTRICT'S UNIVERSAL PARENT/STUDENT HANDBOOK

- 2440 - SUMMER SCHOOL

- The School Board may conduct a summer program of academic instruction for students in grades K-12 and Special Education (SPED) students needing extended school year services as identified in their Individual Education Plan (I.E.P.). The School Board may also choose to implement summer enhancement programs, contingent upon available funding. The School Board shall provide transportation for full-time SPED students and other students as appropriate.

- 2510 - INSTRUCTIONAL MATERIALS AND RESOURCES

- The District shall maintain on its website a current list of instructional materials, by grade level, purchased by the District. This list can be accessed at <http://im.dadeschools.net/>.

- 2623 - STUDENT ASSESSMENT

- Student assessment shall comply with the law and State Board of Education rules to determine the progress of students and to assist them in attaining student performance objectives and the educational achievement goals of the District.
- State-mandated tests (e.g., diagnostic assessments and achievement tests) shall be administered to all eligible students at the times designated by the State Board of Education.
- Administrative procedures for test security and confidentiality of student results are in place to maintain the integrity of District and State assessments.

- 5410 - STUDENT PROGRESSION PLAN

- Provides guidance to teachers, school and district administrators, parents and other stakeholders regarding the requirements and procedures for students to progress from one grade to the next, Kindergarten through grade 12 and Adult Education. The information presented in the document is derived from requirements set forth by Florida Statutes, State Board of Education Rules and policies established by The School Board of Miami-Dade County.

Accident Reports/Incident Reports/School Safety

- 3213 - STUDENT SUPERVISION AND WELFARE

- Protecting the physical and emotional well-being of students is of paramount importance. Each instructional staff member shall maintain the highest professional, moral, and ethical standards in dealing with the supervision, control, and protection of students on or off school property

- 5540 - INVESTIGATIONS INVOLVING STUDENTS

- School administrators shall respond to incidents involving students occurring on school grounds or at school-sponsored events. When conducting an initial fact inquiry, if an administrator suspects that a crime has been committed, they must



MIAMI-DADE COUNTY PUBLIC SCHOOL DISTRICT'S UNIVERSAL PARENT/STUDENT HANDBOOK

report the matter to School Police or another appropriate law enforcement agency to assume the investigative responsibilities.

- 5772 - WEAPONS

- Students are prohibited from possessing, storing, making, or using a weapon, including a concealed weapon, in a school safety zone and any setting that is under the control and supervision of the School Board for the purpose of school activities approved and authorized by the School Board including, but not limited to, property leased, owned, or contracted for by the School Board, a school-sponsored event, or in a School Board-owned vehicle.

- 7217 - WEAPONS

- Visitors are prohibited from possessing, storing, making, or using a weapon, including a concealed weapon, in a school safety zone and any setting that is under the control and supervision of the School Board for the purpose of school activities approved and authorized by the School Board including, but not limited to, property leased, owned, or contracted for by the School Board, a school-sponsored event, or in a School Board-owned vehicle.

- 8405 - SCHOOL SAFETY

- The School Board is committed to maintaining a safe and drug-free environment in all of the District's schools. School crime and violence are multifaceted problems that need to be addressed in a manner that utilizes all available resources in the community through a coordinated effort of School District personnel, law enforcement agencies, and families. School administrators and local law enforcement officials must work together to provide for the safety and welfare of students while they are at school or a school-related event or are on their way to and from school.

- 8410 – EMERGENCY MANAGEMENT, PREPAREDNESS, AND RESPONSE

- The District Critical Incident Response Team (DCIRT) is responsible for assisting schools with emergencies/critical incidents as needed and coordinate District resources.

- FLORIDA STATUTES, SECTION 943.082 – SCHOOL SAFETY AWARENESS PROGRAM

- FortifyFL is a suspicious activity reporting tool that allows users to instantly relay information to appropriate law enforcement agencies and school officials. FortifyFL was created and funded by the 2018 Florida Legislature as part of the Marjory Stoneman Douglas High School Public Safety Act. It is available for free download from the Apple App Store and Google Play Store. It may also be accessed from the Dadeschools.net homepage, as well as the student, parent, and



MIAMI-DADE COUNTY PUBLIC SCHOOL DISTRICT'S UNIVERSAL PARENT/STUDENT HANDBOOK

employee portal pages. A link to FortifyFI has also been placed on each school site information page.

Admission, Registration and Immunization Requirements

- **5112 - ENTRANCE REQUIREMENTS**

- Establishes the admission and registration requirements for students entering school. The following documents and forms are to be provided upon initial registration:
 - Original birth certificate
 - Verification of age and legal name
 - Proof of a physical examination by an approved health care provider including a tuberculosis clinical screening, appropriate follow-up, and a certificate of immunization
 - Two (2) verification of parent/legal current residence (address)

- **5114 - FOREIGN STUDENTS**

- Entry requirements into schools are the same for all students, regardless of country of birth and immigration status. All students will register at the school of the actual residence of the parent in the attendance area as approved by the School Board.

- **5320 – IMMUNIZATION**

- All students shall be immunized against polio, measles-mumps-rubella (MMR) diphtheria, pertussis tetanus (DTaP), hepatitis B, and varicella (chicken pox). Student's with a documented history of the varicella (chicken pox) disease are not required to receive the varicella vaccine. This policy applies to students who currently attend school in the District and those eligible to attend.
- A student who has not completed the required immunization will not be admitted to school.
- Students may receive the Haemophilus Influenzae vaccine during school hours for free. Parents/Guardians MUST provide consent. Parents/guardians should contact their child's school to determine when the flu vaccine will be offered at their child's school.

Animals on District Property

- **8390 - ANIMALS ON DISTRICT PROPERTY**

- Service animals as required by law are permitted in schools. "Service animals" pursuant to 28 C.F.R. 35.104, means any dog that is individually trained to do work or perform tasks for the benefit of an individual with a disability, including a physical, sensory, psychiatric, intellectual, or other mental disability.
- All animals, including service animals, housed on District property or brought on District property on a regular basis must meet every State and County veterinary requirement, including but not limited to, rabies vaccination or other inoculations required to be properly licensed.



MIAMI-DADE COUNTY PUBLIC SCHOOL DISTRICT'S UNIVERSAL PARENT/STUDENT HANDBOOK

- Students are not allowed to bring pets to school.

Anti-Discrimination Policy

- **5517 – ANTI-DISCRIMINATION/HARASSMENT (STUDENTS)**

- The School Board shall comply with all Federal laws and regulations prohibiting discrimination/harassment based on sex, race, color, ethnic or national origin, religion, marital status, disability, age, political beliefs, sexual orientation, gender, gender identification, social and family background, linguistic preference, pregnancy, and any other basis prohibited by law and all requirements and regulations of the U.S. Department of Education. The School Board will enforce its prohibition against such discrimination/harassment against students in accordance with School Board Policies 5517, 5517.02 and 5517.03. This policy prohibits discrimination and harassment at all School District operations, programs, and activities on school property, or at another location if it occurs during an activity sponsored by the School Board.

- **5517.01 – BULLYING AND HARASSMENT**

- The School Board is committed to providing a safe learning environment for all students and shall strive to eradicate bullying and harassment in its schools, with bullying defined as systematically and chronically inflicting physical harm or psychological distress on one or more students.
- The School Board is committed to providing awareness, prevention, and education in promoting a school atmosphere in which bullying, harassment, and intimidation will not be tolerated by students, School Board employees, visitors, or volunteers.
- This policy provides the steps to individual complaints of bullying and harassment and the process for addressing the complaints.

- **5517.02 - DISCRIMINATION/HARASSMENT COMPLAINT PROCEDURES FOR STUDENTS**

- Students and parents are encouraged to promptly report complaints of discriminatory or harassing conduct to their Principal. Additionally, they may file the complaint directly with the Region Office or the District's Office of Civil Rights Compliance (CRC).
- All complaints involving student to student harassment, except sexual harassment, will be first investigated at the school site. If such complaints are made directly to the District Office, the Region Office or the CRC Office, they will be referred to the school site for the initial investigation. Complaints including sexual harassment of a student will be investigated by the CRC Office with support from school.
- This policy provides the steps to individual complaints of discrimination and harassment based on protected categories and the process for addressing the complaints.



MIAMI-DADE COUNTY PUBLIC SCHOOL DISTRICT'S UNIVERSAL PARENT/STUDENT HANDBOOK

Attendance Policy/School Hours

- 5200 – ATTENDANCE
 - Student attendance is a means of improving student performance and critical in raising student achievement. Together, the staff of Miami-Dade County Public Schools, students, parents and the community must make every effort to lessen the loss of instructional time to students.
- 5225 - ABSENCES FOR RELIGIOUS HOLIDAYS
 - Student absences for religious purposes, as identified on the approved holidays listed in the Student Attendance Reporting Procedures PK-12 Handbook, may not prohibit students from receiving attendance awards or other attendance incentives at the school level, region level, or District level.
- 5230 - LATE ARRIVAL AND EARLY DISMISSAL
 - Students shall be in attendance throughout the school day. If a student will be late to school or dismissed before the end of the school day, the parent shall notify the school in advance and state the reason for the tardiness or early dismissal. Justifiable reasons shall be determined by the principal. Students will be counted absent if they are not present in class for at least half of the class period. To be counted "present" for the day, the student must be in attendance for a minimum of two hours of the day unless extenuating circumstances exist.
 - The parent – and in the case of divorced or separated parents, the enrolling parent shall indicate on the Emergency Student Data Form the individual(s) to whom the student may be released during the school day.
- 8220 - SCHOOL DAY
 - The Superintendent shall annually establish the hours of the school day. The Superintendent may authorize exceptions from the regular school day.
 - The Superintendent may close the schools, delay the opening of school, or dismiss school early when such alteration in the regular session is required for the protection of the health and safety of students and staff members.

Ceremonies & Observances

- 8800 - RELIGIOUS/PATRIOTIC CEREMONIES AND OBSERVANCES
 - Acknowledgement of, explanation of, and teaching about religious holidays of various religions is permitted. Celebration activities involving nonreligious decorations and use of secular works are permitted, but it is the responsibility of all faculty members to ensure that such activities are strictly voluntary, do not place an atmosphere of social compulsion or ostracism on minority groups or individuals, and do not interfere with the regular school program.

Class Size



MIAMI-DADE COUNTY PUBLIC SCHOOL DISTRICT'S UNIVERSAL PARENT/STUDENT HANDBOOK

- CLASS SIZE STATE STATUTE

- Florida citizens approved an amendment that set limits on the number of students in core academic classes in public schools. The amendment requires classes to be in compliance at the class level. However, pursuant to language passed by the 2013 Florida Legislature in HB 7009 and subsequently approved by the Governor, amending Florida Statute 1002.31, Public School Parental Choice, the calculation for compliance with class size limits pursuant to Florida Statute 1003.03 for a school or program that is a public school of choice is measured by the average number of students at the school level.

Clinic

- 5330 – USE OF MEDICATIONS

- The School Board shall not be responsible for the diagnosis and treatment of student illness. The administration of prescribed medication and/or medically-prescribed treatments to a student during school hours will be permitted only when failure to do so would jeopardize the health of the student, the student would not be able to attend school if the medication or treatment were not made available during school hours, or the child is disabled and requires medication to benefit from his/her educational program.

Code of Student Conduct

- 2451 - ALTERNATIVE SCHOOL PROGRAMS

- The Superintendent may provide alternative education programs for students who, in the opinion of the Superintendent, will benefit from this educational option. Participation in an alternative program does not exempt the student from complying with school attendance rules or the Code of Conduct.

- 5136.02 - SEXTING

- Sexting is the act of sending or forwarding through cellular telephones and other electronic media sexually explicit, nude, or partially nude photographs/images. [add something about disciplinary measures] It is the District's mission to ensure the social, physical, psychological, and academic well-being of all students. The educational purposes of the schools are best accomplished in a climate of student behavior that is socially acceptable and conducive to the learning and teaching process.

- 5500 - STUDENT CONDUCT AND DISCIPLINE

- The Code of Student Conduct (COSC) is aligned to local, state, and federal mandates with an emphasis on promoting a safe learning environment to ensure academic success. The Code of Student Conduct sets the standards of conduct expected of students in a purposeful safe learning environment which the principles of care, courtesy, civility, fairness, acceptance of diversity, and respect for the rights of others is valued. It also addresses the role of the



MIAMI-DADE COUNTY PUBLIC SCHOOL DISTRICT'S UNIVERSAL PARENT/STUDENT HANDBOOK

parents/guardians, the students, and school, but also focuses on core values and model student behavior, rights and responsibilities of students, addressing student behavior, and disciplinary procedures.

- Furthermore, it should also be noted that behaviors committed on or off the school campus may be violations of the COSC and may also be violations of Florida law. These violations may result in disciplinary actions imposed by local law enforcement authorities, in addition to those of the school/district. The Superintendent, principals, and other administrators shall assign discipline/corrective strategies to students, including assignment to an interim alternative educational setting pursuant to the Code of Student Conduct and, in accordance with the student's due process rights.
- 5511 - DRESS CODE AND SCHOOL UNIFORMS
 - Students are expected to come to school with proper attention having been given to personal cleanliness, grooming, and neatness of dress. Students whose personal attire or grooming distracts the attention of other students or teachers from their schoolwork shall be required to make the necessary alterations to such attire or grooming before entering the classroom or be sent home by the principal to be properly prepared for school. Students who fail to meet the minimum acceptable standards of cleanliness and neatness as determined by the principal and as specified in this policy shall be subject to appropriate disciplinary measures.

Digital Conversion/Social Media

- 7540.03 - STUDENT RESPONSIBLE USE OF TECHNOLOGY, SOCIAL MEDIA, AND DISTRICT NETWORK SYSTEMS
 - The School Board provides students access to a large variety of technology and network resources which provide multiple opportunities to enhance learning and improve communication within the school district and the community. All users must, however, exercise appropriate and responsible use of school and District technology and information systems. Users include anyone authorized by administration to use the network. This policy is intended to promote the most effective, safe, productive, and instructionally sound uses of network information and communication tools.

Equal Opportunity

- 2260 - NONDISCRIMINATION AND ACCESS TO EQUAL EDUCATIONAL OPPORTUNITY
 - The School Board shall provide equal opportunity for all students and will not discriminate or tolerate harassment in its educational programs or activities on any basis prohibited by law or School Board Policy.



MIAMI-DADE COUNTY PUBLIC SCHOOL DISTRICT'S UNIVERSAL PARENT/STUDENT HANDBOOK

- 5111.01 - HOMELESS STUDENTS

- The District Project UP-START program serves children and youth who are identified as meeting the Federal definition of "homeless". Homeless children and youth, including those who are not currently enrolled in school due to homelessness, shall have equal access to the same free appropriate public education (FAPE) in public schools and preschool education programs in the same manner as all other District students.
- Additionally, homeless students shall have access to other services needed to ensure an opportunity to meet the same challenging State academic standards to which all students are held and to fully participate in the District's academic and extra-curricular activities for which they meet relevant eligibility criteria. To that end, homeless students shall not be stigmatized or segregated on the basis of their status as homeless.

Fieldtrips/School Social Events

- 2340 - FIELD AND OTHER DISTRICT-SPONSORED TRIPS

- Field trips should supplement and enrich classroom procedures by providing learning experiences in an environment outside the schools, arouse new interests among students, help students relate school experiences to the reality of the world outside of school, bring the resources of the community - natural, artistic, industrial, commercial, governmental, educational - within the student's learning experience, and afford students the opportunity to study real things and real processes in their actual environment.
- Other District-sponsored trips are defined as any planned, student-travel activity approved as part of the District's total educational program and is under the direct supervision and control of an instructional staff member or any advisor designated by the Superintendent.

- 5850 - SCHOOL SOCIAL EVENTS

- School facilities and appropriate staff will be made available for social events approved by the principal within and outside school facilities.

- 8640 - TRANSPORTATION FOR FIELD AND OTHER DISTRICT-SPONSORED TRIPS

- Regular or special-purpose school vehicles shall be used for transportation on field and other District-sponsored trips.

Financial Obligations

- 6152 - STUDENT FEES

- The School Board may levy certain charges to students to facilitate the utilization of adequate, appropriate learning materials used in the course of instruction.



MIAMI-DADE COUNTY PUBLIC SCHOOL DISTRICT'S UNIVERSAL PARENT/STUDENT HANDBOOK

Food & Nutrition/Wellness Policy

- 8500 - FOOD SERVICES
 - The Food and Nutrition service program strives to provide school food services consistent with the nutritional needs of students and provide school food services that contribute to the student's educational experiences and the development of desirable eating habits.
- 8510 - WELLNESS POLICY
 - The District is committed to providing a healthy environment for students and staff within the school environment, recognizing that individuals must be physically, mentally, and socially healthy in order to promote wellness and academic performance.
 - The District focuses on achieving five goals: nutrition, physical education, physical activity: recess, health & nutrition literacy and preventive healthcare.
- 8531 - FREE AND REDUCED-PRICE MEALS
 - All students determined to be economically needy shall be provided upon request a free or reduced-price meal or meals at school.

Fundraising

- 5830 – STUDENT FUNDRAISING
 - Student fundraising by students is limited in order to prevent disruption and includes student solicitation and collection of money for any purpose including collection of money in exchange for tickets, papers, or any other goods or services. Student fundraising in school, on school property, or at any school-sponsored event is permitted only when the profit is to be used for school purposes or for an activity connected with the schools.
 - No student, school organization, or member of the school staff may solicit funds in the name of the school from the public for any purpose without prior approval of the school principal and the Region Superintendent or his/her designee. All approvals must be in writing using the approved District forms and must be retained at the school for audit purposes.
- 6605 – CROWDFUNDING
 - Crowdfunding activities aimed at raising funds for a specific classroom or school activity, including extra-curricular activity, or to obtain supplemental resources (e.g., supplies or equipment) that are not required to provide a free appropriate public education to any students in the classroom may be permitted, but only with the specific approval by the principal and the region administrator. Crowdfunding for specific causes requires the approval of the Superintendent or his/her designee.



MIAMI-DADE COUNTY PUBLIC SCHOOL DISTRICT'S UNIVERSAL PARENT/STUDENT HANDBOOK

- 9211 – SCHOOL – ALLIED AND OTHER OUTSIDE SUPPORT ORGANIZATIONS

- The School Board appreciates the efforts of all organizations whose objectives are to enhance the educational experiences of District students, to help meet educational needs of students and/or provide extra educational benefits.

Health Screening

- 2410 - SCHOOL HEALTH SERVICES PROGRAM

- The health services provided by the District shall supplement, not replace, parental responsibility, and shall appraise, protect, and promote student health. These services shall be designed to encourage parents to devote attention to child health, to discover health problems, and to encourage the use of the services of physicians, dentists, and community health agencies as needed.
- Vision, hearing, scoliosis, and growth and development screenings are conducted based on mandated grade levels. Screenings do not substitute a thorough examination in a medical providers office. Parents/guardians must provide the school with written notification if you **do not** want your child to participate in the screening program.

Homework

- 2330 - HOMEWORK

- Homework is an essential component of the learning process for students with the assignment of meaningful learning activities. Assignments should be based on learning outcomes that build students' conceptual understanding, develop thinking skills, and focus on the application of knowledge.

Internship

- 2424 - STUDENT INTERNSHIPS

- Student participation in an internship program authorized by the High School to Business Career Enhancement Act may serve as a positive educational experience and provide a foundation for future employment opportunities.

Parent Choice Student Transfers

- 2431 - INTERSCHOLASTIC ATHLETICS

- All activities relating to competitive sport contests, games, or events involving individual students or teams of students from high schools in this District with those from a high school in another district.



MIAMI-DADE COUNTY PUBLIC SCHOOL DISTRICT'S UNIVERSAL PARENT/STUDENT HANDBOOK

- All high schools shall be members of and governed by the Florida High School Athletic Association (FHSA) rules and regulations and shall comply with the eligibility requirements established by the FHSA.
- 5120 - STUDENT SCHOOL ASSIGNMENT AND ATTENDANCE BOUNDARY COMMITTEE
 - The assignment of students to District schools shall be consistent with the best interests of students and the best use of District resources.
- 5131 – CONTROLLED OPEN ENROLLMENT/PARENT / STUDENT TRANSFERS
 - This policy governs all regular school transfers from one (1) school to another, except for transfers to Magnet programs/schools that are subject to specific admissions requirements and governed by School Board Policy 2370, Magnet Programs/Schools.
 - Controlled Open Enrollment allows the School District to make K-12 school assignments using parents indicated preferential educational choice in-county and out-of-county. This section of the policy does not apply to charter schools. Charter schools must adopt their own controlled open enrollment plan.
 - Controlled Open Enrollment is active during a specific window period between end of year and the subsequent school year.

Parent Involvement

- 2111 - PARENT INVOLVEMENT– A HOME-SCHOOL-DISTRICT PARTNERSHIP
 - A collaborative environment is encouraged in which the parents and families of District students are invited and encouraged to be involved stakeholders in the school community. This policy establishes the framework and responsibilities for implementation of strategies to increase family and community involvement. A copy of this policy must be distributed to all parents.
- 9210 - PARENT ORGANIZATIONS
 - The Parent-Teacher/Parent-Teacher-Student Associations (PTA/PTSA) in the District are acknowledged as sincerely interested in, and staunch supporters of public education in Miami-Dade County.

Pledge of Allegiance

- 8810 - THE AMERICAN FLAG AND OFFICIAL MOTTO OF THE STATE OF FLORIDA
 - The Pledge of Allegiance shall be recited at the beginning of the day in every school.
 - A student has the right not to participate in reciting the pledge. Upon written request by his/her parent, the student must be excused from reciting the pledge, including standing and placing the right hand over his/her heart.



MIAMI-DADE COUNTY PUBLIC SCHOOL DISTRICT'S UNIVERSAL PARENT/STUDENT HANDBOOK

Privacy

- 2416 - STUDENT PRIVACY AND PARENTAL ACCESS TO INFORMATION
 - Parents have the right to inspect, upon request, a survey or evaluation created by a third party or any instrument used in the collection of personal information before the survey/evaluation is administered or distributed by the school to the student. The parent will have access to the survey/evaluation or instrument within a reasonable period of time after the request is received by the principal.

Schools of Choice/Magnet Schools

- 2370 - MAGNET PROGRAMS/SCHOOLS
 - Magnet programs/schools broaden public school choice, stem declining enrollment, mitigate overcrowding, help comply with Federal and State-mandated public school choice provisions, accommodate parent/student interest, improve the quality of education, and promote diverse student enrollments. Magnet programs/schools are unique educational programs operating within the District, for which additional resources and/or ancillary services may be provided to help make such educational experiences available to students beyond a single attendance boundary area.

School Transportation/Bus Safety Conduct

- 8600 – TRANSPORTATION
 - Students living more than two miles from their home school will be eligible for District-provided bus transportation. Students who attend school out of their home school zone will not be eligible for District-provided transportation.

Special Education/Section 504

- 2260.01 SECTION 504 PROCUDURES FOR STUDENTS WITH DISABILITIES
 - A student is entitled to a free appropriate public education FAPE and may be entitled to Section 504 accommodations if s/he has a physical or mental impairment that substantially limits one (1) or more major life activities.
- 2460 – EXCEPTIONAL STUDENT EDUCATION
 - The School Board shall provide a free, appropriate, public education for students with disabilities according to State and Federal laws, rules, and regulations and shall implement the procedures document entitled Exceptional Student Education Policies and Procedures.
- FLORIDA STATUTES, SECTION 1003.572 - PUBLIC-PRIVATE COLLABORATION
 - Parents who wish to request public-private collaboration in the educational setting should direct requests to the Principal for application of District procedures. Requests should be made in writing on District forms and specify the purpose of the collaboration. The principal will review requests and provide approval in accordance with statutory guidelines.



MIAMI-DADE COUNTY PUBLIC SCHOOL DISTRICT'S UNIVERSAL PARENT/STUDENT HANDBOOK

Student Activities

- 5845 - STUDENT ACTIVITIES
 - All clubs and organizations approved by the principal to operate within the school must comply with this district policy. A student who wishes to represent the school through interscholastic competitions or performance must comply with the criteria set forth in policy.

Student Records/Access to Student Records

- 8330 - STUDENT RECORDS
 - Parents and eligible students have the right to access education records, including the right to inspect and review those records, and have the right to waive their access to their education records in certain circumstances. Prior written consent of the parent, guardian, or eligible student shall be obtained prior to disclosing personally identifiable student information, except under certain circumstances.
- 8350 - CONFIDENTIALITY
 - A student's educational record and all personally identifiable information shall not be properly released except on the condition that the information being transferred will not be subsequently released to any other party without first obtaining the consent of the parent or adult/eligible student.

Student Services

- 2290 - CHARACTER EDUCATION
 - The School Board shall assist all students in developing the core values and strength of character needed for them to become caring, responsible citizens at home, school, and in the community. There are nine core values that form the basis for the character education program. These values are Citizenship, Cooperation, Fairness, Honesty, Kindness, Integrity, Pursuit of Excellence, Respect, and Responsibility.
- 5530 - DRUG PREVENTION
 - Schools shall strive to prevent drug abuse and help drug abusers through educational means.
 - The use, possession, concealment, or distribution of any drug or any drug-related paraphernalia, or the misuse of a product containing a substance that can provide an intoxicating or mood-altering effect or the misuse of any "over-the-counter" medications or substances are prohibited on school grounds, on school vehicles, and at any school-sponsored event.



MIAMI-DADE COUNTY PUBLIC SCHOOL DISTRICT'S UNIVERSAL PARENT/STUDENT HANDBOOK

Title I – Schoolwide Program

- 2261 - TITLE I SERVICES

- The School Board elects to augment the educational program of disadvantaged students through the use of Federal funds, in accordance with the Elementary and Secondary Education Act (ESEA) of 1965, as reauthorized under the Every Student Succeeds Act of 2015. The ESEA is based on four (4) basic principles: stronger accountability for results, increased flexibility and local control, expanded options for parents, and an emphasis on proven educational methods. Parents of participating students are encouraged to be involved in programs, activities, and procedures that are planned and implemented to support children's academic growth.

Technology

- 7540 – COMPUTER TECHNOLOGY AND NETWORKS

- The School Board is committed to the effective use of technology to both enhance the quality of student learning and the efficiency of Board operations. The School Board prohibits any access and use of social media by students and staff members from the District's network, except to the District's collaboration sites and/or approved sites as directed by the Superintendent.

- 7540.01 – TECHNOLOGY PRIVACY

- All computers, telephone systems, electronic mail systems, and voice mail systems are the District's property and are to be used primarily for business purposes. The District has the right to access and review all electronic and voice mail, computer files, data bases, and any other electronic transmissions contained in or used in conjunction with the District's computer system, telephone system, electronic mail system, and voice mail system.

- 7540.03 – STUDENT RESPONSIBLE USE OF TECHNOLOGY, SOCIAL MEDIA, AND DISTRICT NETWORK SYSTEMS

- The School Board provides students access to a large variety of technology and network resources which provide multiple opportunities to enhance learning and improve communication within the school district and the community. All users must, however, exercise appropriate and responsible use of school and District technology and information systems. Users include anyone authorized by administration to use the network. This policy is intended to promote the most effective, safe, productive, and instructionally sound uses of network information and communication tools.

- 7540.06 – STUDENT ELECTRONIC MAIL

- This policy establishes the use of District student electronic mail (e-mail) system by students, their parents and others and applies to any and all electronic messages composed, sent or received by anyone using the District's student e-



MIAMI-DADE COUNTY PUBLIC SCHOOL DISTRICT'S UNIVERSAL PARENT/STUDENT HANDBOOK

mail system. Authorized users of e-mail are students, their parents and any other individuals or groups issued District student e-mail accounts

Threat Assessments

- FLORIDA STATUTES, SECTION 1006.07(7)
 - The Marjory Stoneman Douglas Act, among other things, requires the school district to form Threat Assessment Teams at each school to coordinate resources and assessment and intervention with individuals whose behavior may pose a threat to the safety of school staff and students.

Visitors

- 9150 - SCHOOL VISITORS
 - Parents, other adult residents of the community, and interested educators are encouraged to visit schools. All visitors must present identification that will be processed through the District's RAPTOR system prior to being permitted entry into the school grounds.
 - The Principal has the authority, however, to prohibit the entry of any person to a school or expel any person when there is reason to believe the presence of such person would be detrimental. If an individual refuses to leave the school grounds or creates a disturbance, the principal is authorized to request assistance from School Police or the local law enforcement agency to remove the individual. A visitor's refusal to adhere to the school principal's directive to leave the school grounds, will subject the visitor to arrest.

Volunteer Program

- 2430.01 - SCHOOL VOLUNTEERS
 - The School Board recognizes that certain programs and activities can be enhanced through the use of volunteers who have knowledge or skills that will be helpful to members of the school staff who are responsible for the conduct of those programs and activities. A school volunteer is any non-compensated person who may be appointed by the Superintendent or his/her designee. School volunteers may include, but are not limited to, parents, senior citizens, students, and others who assist the teacher or other members of the school staff.



MIAMI-DADE COUNTY PUBLIC SCHOOL
DISTRICT'S UNIVERSAL PARENT/STUDENT HANDBOOK

APPENDIX C – Disclosure at Time of Registration



MIAMI-DADE COUNTY PUBLIC SCHOOL DISTRICT'S UNIVERSAL PARENT/STUDENT HANDBOOK



MIAMI-DADE COUNTY PUBLIC SCHOOLS

DISCLOSURE AT TIME OF REGISTRATION

Chapter 1006.07 (1)(b), requires that any student seeking admission to a public school in the State of Florida will provide the following information at the time of initial registration:

1) Has the student ever been expelled from any school, in or out of the State of Florida?

YES ☐ NO ☐

If your answer to question 1 is "YES", please list each and every instance for which the student was expelled.

2) Please state whether the student has ever been arrested where the arrest resulted in the student being formally charged. If your answer is "YES", please list each and every arrest which resulted in a formal charge.

3) Please state whether the student has ever been involved as a party in a case before the Juvenile Justice System? If so, state each action taken by the Juvenile Justice System which involved the student.

4) Please state whether the student has any corresponding referrals to mental health services related to your answers to Questions 1, 2 and 3. If yes, please list them.

Student's Name _____ ID. # _____

(Please Print)

Ethnic _____ (Check all that apply) Race: White ☐ Black ☐ Asian ☐
Hispanic _____ American Indian ☐ Native Pacific Islander ☐

Date of Birth _____ Parent's/Guardian's Name _____

Address _____

Signature (Parent/Guardian) _____

Signature (Student) _____ Date Signed _____

FM-5740E Rev. (07-19)



MIAMI-DADE COUNTY PUBLIC SCHOOL DISTRICT'S UNIVERSAL PARENT/STUDENT HANDBOOK

APPENDIX D – Discrimination/Harassment Poster and Policy

THE SCHOOL BOARD OF MIAMI-DADE COUNTY, FLORIDA
ADHERES TO A POLICY OF NONDISCRIMINATION IN THE EDUCATIONAL AND WORK ENVIRONMENT

DISCRIMINATION / HARASSMENT

It is the policy of the School Board that all students and employees be treated with respect. The School Board affirmatively strives to provide a workplace and educational environment free from discrimination and harassment (including sexual harassment), as required by law. Through this policy, the School Board establishes its intent to provide equal access, opportunity, and treatment to students in the provision of educational programs and activities and to applicants and employees in all aspects of employment. Slurs, innuendos, hostile treatment, violence, or verbal or physical conduct against a student or employee reflecting on his/her race, ethnic or national origin, gender or any other of the categories described below, will NOT be tolerated by the School Board.

The School Board Policy Covers the Following Protected Categories:

<p>AGE - This category prevents denial of employment and/or educational opportunities because of a person's age.</p> <p>CITIZENSHIP STATUS - This category prevents denial of employment and/or educational opportunities because of a person's citizenship or immigration status.</p> <p>COLOR - This category prevents denial and/or educational opportunities because of a person's skin tone. Color discrimination can occur within the same race; for example someone who has a darker complexion may discriminate against someone that has a lighter complexion.</p> <p>DISABILITY - This category prevents denial of employment and/or educational opportunities because of a person has, or is perceived to have a permanent impairment that substantially limits or prevents a major life activity; for example: walking, seeing, hearing, talking, sitting, or standing.</p> <p>ETHNIC/NATIONAL ORIGIN - This category prevents denial of employment and/or educational opportunities because of a person's ancestral place of origin; or because an individual has the physical, cultural or linguistic characteristics of a particular group.</p> <p>GENDER - This category prevents denial of employment and/or educational opportunities because of a person's gender or sex.</p> <p>GENDER IDENTITY - This category prevents denial of employment and/or educational opportunities because of a person's gender-related identity, appearance, expression or behavior, regardless of the individual's assigned sex at birth.</p> <p>GENETIC INFORMATION (GINA) - This category prevents denial of equal employment and/or harassment because of a person's genetic information; it ensures that individuals are not treated differently because of genetic information.</p> <p>LINGUISTIC PREFERENCE - This category prevents denial of employment and/or educational opportunities because of the language a person speaks.</p>	<p>MARITAL STATUS - This category prevents denial of employment and/or educational opportunities because of a person's marital status; i.e. single, married, widowed, or divorced.</p> <p>POLITICAL BELIEFS - This category prevents denial of employment and/or educational opportunities because of a person's support and/or affiliation or lack thereof with a particular political party.</p> <p>PREGNANCY - This category prevents denial of employment and/or educational opportunities for women who are pregnant.</p> <p>RACE - This category prevents denial of employment and/or educational opportunities because of a person's race. The five federally recognized racial categories are American Indian or Alaskan Native, Asian, Black or African American, Hawaiian or Other Pacific Islander, and White. Persons from a mixed racial background do not need to prove their exact heritage in order to assert that they have been discriminated against based on race. Likewise, this category covers persons being discriminated against because they are married to persons of a different race other than their own.</p> <p>RELIGION - This category prevents denial of employment and/or educational opportunities because of a person's sincerely held religious beliefs.</p> <p>SEX - This category prevents denial of equal employment and/or educational opportunities because of a person's male or female gender.</p> <p>SEXUAL ORIENTATION - This category prevents denial of equal employment and/or educational opportunities because a person is, or is perceived to be, lesbian, gay, bisexual, or heterosexual.</p> <p>SOCIAL AND FAMILY BACKGROUND - This category prevents denial of employment and/or educational opportunities because of a person's socio-economic, family and/or educational background.</p>
---	--

Sexual Harassment will NOT be tolerated.

MIAMI-DADE COUNTY PUBLIC SCHOOLS (M-DCPS) DOES NOT DISCRIMINATE ON THE BASIS OF SEX IN ANY EDUCATION PROGRAM OR ACTIVITY THAT IT OPERATES AS REQUIRED BY TITLE IX. M-DCPS ALSO DOES NOT DISCRIMINATE ON THE BASIS OF SEX IN ADMISSIONS OR EMPLOYMENT.

RETALIATION AGAINST A STUDENT OR EMPLOYEE WHO FILES A COMPLAINT IS PROHIBITED BY LAW

Retaliation is an adverse action taken against an individual because they engaged in a protected activity, such as complaining about discrimination, threatening to file a charge of discrimination, or participating in investigative proceedings.

For additional information about Title IX or any other discrimination/harassment concerns, contact the U.S. Department of Education Assistant Secretary for Civil Rights and/or:

Office of Civil Rights Compliance (CRC)
 Executive Director/Title IX Coordinator
 155 N.E. 15th Street, Suite P104E
 Miami, Florida 33132
 Phone: (305) 995-1580 TDD: (305) 995-2400
 Email: crc@dadeschools.net
 Website: <http://www.hrdadeschools.net/civilrights/>

For information on Section 504 of the Rehabilitation Act of 1973 or any other student disability concerns contact:

Division of Special Education
 504 Coordinator
 1501 N.E. 2nd Avenue, Suite 409
 Miami, Florida 33132
 Phone: (305) 995-2037 TDD: (305) 995-2400
 Email: ese@dadeschools.net
 Website: <http://ese.dadeschools.net>

Rev: 07/2020



MIAMI-DADE COUNTY PUBLIC SCHOOL DISTRICT'S UNIVERSAL PARENT/STUDENT HANDBOOK

Anti-Discrimination Policy

The School Board of Miami-Dade County, Florida adheres to a policy of nondiscrimination in employment and educational programs/activities and strives affirmatively to provide equal opportunity for all as required by:

Title VI of the Civil Rights Act of 1964 - prohibits discrimination on the basis of race, color, religion, or national origin.

Title VII of the Civil Rights Act of 1964 as amended - prohibits discrimination in employment on the basis of race, color, religion, gender, or national origin.

Title IX of the Education Amendments of 1972 - prohibits discrimination on the basis of gender. M-DCPS does not discriminate on the basis of sex in any education program or activity that it operates as required by Title IX. M-DCPS also does not discriminate on the basis of sex in admissions or employment.

Age Discrimination Act of 1975 - prohibits discrimination based on age in programs or activities.

Age Discrimination in Employment Act of 1967 (ADEA) as amended - prohibits discrimination on the basis of age with respect to individuals who are at least 40 years old.

The Equal Pay Act of 1963 as amended - prohibits gender discrimination in payment of wages to women and men performing substantially equal work in the same establishment.

Section 504 of the Rehabilitation Act of 1973 - prohibits discrimination against the disabled.

Americans with Disabilities Act of 1990 (ADA) - prohibits discrimination against individuals with disabilities in employment, public service, public accommodations and telecommunications.

The Family and Medical Leave Act of 1993 (FMLA) - requires covered employers to provide up to 12 weeks of unpaid, job-protected leave to eligible employees for certain family and medical reasons.

The Pregnancy Discrimination Act of 1978 - prohibits discrimination in employment on the basis of pregnancy, childbirth, or related medical conditions.

Florida Educational Equity Act (FEEA) - prohibits discrimination on the basis of race, gender, national origin, marital status, or handicap against a student or employee.

Florida Civil Rights Act of 1992 - secures for all individuals within the state freedom from discrimination because of race, color, religion, sex, national origin, age, handicap, or marital status.

Title II of the Genetic Information Nondiscrimination Act of 2008 (GINA) - prohibits discrimination against employees or applicants because of genetic information.

Boy Scouts of America Equal Access Act of 2002 - No public school shall deny equal access to, or a fair opportunity for groups to meet on school premises or in school facilities before or after school hours, or discriminate against any group officially affiliated with Boy Scouts of America or any other youth or community group listed in Title 36 (as a patriotic society).

Veterans are provided re-employment rights in accordance with P.L. 93-508 (Federal Law) and Section 295.07 (Florida Statutes), which stipulate categorical preferences for employment.

In Addition:

School Board Policies 1362, 3362, 4362, and 5517 - Prohibit harassment and/or discrimination against students, employees, or applicants on the basis of race, color, ethnic or national origin, religion, marital status, disability, genetic information, age, political beliefs, sexual orientation, sex/gender, gender identification, social and family background, linguistic preference, pregnancy, citizenship status, and any other legally prohibited basis. Retaliation for engaging in a protected activity is also prohibited.

For additional information about Title IX or any other discrimination/harassment concerns, contact the U.S. Department of Education Asst. Secretary for Civil Rights or:

Office of Civil Rights Compliance (CRC)
Executive Director/Title IX Coordinator
155 N.E. 15th Street, Suite P104E
Miami, Florida 33132
Phone: (305) 995-1580 TDD: (305) 995-2400
Email: crc@dadeschools.net Website: <https://dadeschools.net/civilrights>

Revised 07/2020

